

AENC-NG-CNS-MAN-0001

Norwich to Tilbury

Volume 1: Application Forms

Document: 1.3 Guide to the Application - Tracked Changes Version

Revision C

November 2025

Planning Inspectorate Reference: EN020027

Infrastructure Planning (Applications: Prescribed Forms and Procedure)
Regulations 2009 Regulation 5(2)(q)

nationalgrid

Revision History

<u>Version</u>	<u>Date</u>	<u>Submitted at</u>
<u>A</u>	<u>29 August 2025</u>	<u>DCO Application</u>
<u>B</u>	<u>13 October 2025</u>	<u>Responses to advice provided under section 51 of the Planning Act 2008 by the Planning Inspectorate</u>
<u>C</u>	<u>13 November 2025</u>	<u>Providing supplementary environmental information to Responses to advice provided under section 51 of the Planning Act 2008 by the Planning Inspectorate</u>

Contents

1.	Introduction	1
1.1	Overview	1
1.2	Purpose of this Document	2
1.3	Application Documentation	2
1.4	Document Referencing	4
2.	Application Volumes	7
2.1	Overview	7
2.2	Volume 1: Application Forms	7
2.3	Volume 2: Plans, Drawings and Sections	8
2.4	Volume 3: Draft Development Consent Order	11
2.5	Volume 4: Compulsory Acquisition Information	12
2.6	Volume 5: Reports and Statements	13
2.7	Volume 6: Environmental Statement	16
2.8	Volume 7: Other Documents	23
Table 1.1 Volumes forming the Application		2
Table 1.2 Document Referencing		4
Figure 1.1 Example 1 (two-digit reference number)		5
Figure 1.2 Example 2 (three-digit reference number)		5
Figure 1.3 Example 3 (two-digit reference with figures or appendices)		6
Bibliography		27
Appendix A Master Document List and Revision History		

1. Introduction

1.1 Overview

- 1.1.1 National Grid Electricity Transmission plc ('National Grid') owns and maintains the national high voltage electricity transmission network throughout England and Wales.
- 1.1.2 The transmission network connects the power from where it is generated to the regional Distribution Network Operators who then supply businesses and homes.
- 1.1.3 National Grid holds the transmission licence for England and Wales, and its duty is to develop and maintain an efficient, coordinated and economical system of electricity transmission and to facilitate competition in the generation and supply of electricity, as set out in the Electricity Act 1989.
- 1.1.4 National Grid has developed plans for Norwich to Tilbury (referred to as the 'Project' in this report). The Project would support the UK's net zero target through the connection of new low carbon energy generation in East Anglia and by reinforcing the transmission network
- 1.1.5 The Project comprises reinforcement of the transmission network between the existing Norwich Main Substation in Norfolk and Tilbury Substation in Essex, via Bramford Substation, the new East Anglia Connection Node (EACN) substation and the new Tilbury North substation.
- 1.1.6 The reinforcement is needed because the existing transmission network, even with current upgrading, will not have sufficient capacity for the new renewable energy (a substantial proportion of which would be generated by offshore wind) that is expected to connect to the network over the next 10 years and beyond. Completion of the Project, together with other new reinforcements across the country, will meet this future energy transmission demand both in East Anglia and across the UK.
- 1.1.7 The Project is a Nationally Significant Infrastructure Project (NSIP), and National Grid is seeking development consent under statutory procedures set by government. NSIPs are projects of certain types, over a certain size, which are considered by the government to be of national importance, hence permission to build them needs to be given at a national level, by the relevant Secretary of State (in this case the Secretary of State for Energy Security and Net Zero). Instead of applying to the local authority for planning permission, the developer must apply to the Planning Inspectorate for a Development Consent Order (DCO) that would grant development consent.
- 1.1.8 National Grid has submitted an application for development consent to the Planning Inspectorate. The Examining Authority (consisting of one or more examining inspectors), after a period of public examination, would make their recommendation to the Secretary of State for Energy Security and Net Zero, who in turn would decide on whether development consent should be granted for the Project.
- 1.1.9 The Project is identified as critical to delivering a network which supports the clean power pathways for 2030 delivery.

1.2 Purpose of this Document

- 1.2.1 This Guide to the Application summarises the structure of the Application for the Project. Its purpose is to provide an overview of the application structure and principal contents within each 'volume' of documents shown in Figure 1.1.
- 1.2.2 The Master Document List in Section 3 is intended to be updated as the examination of the application proceeds so any updates and revisions to application documents are captured in an easy-to-comprehend way.

1.3 Application Documentation

- 1.3.1 Due to the size and scale of the application, the supporting documentation has been grouped into volumes which correspond with the Planning Inspectorate's suggested categories for application documents. There are seven different volumes as shown in Table 1.1.

Table 1.1 Volumes forming the Application

Document Volume	Context
Volume 1 Application Forms	Contains the completed Application form, the Covering Letter, this Guide to the Application document, copies of newspaper notices, the Pre-application Programme Document, the Section 55 Checklist completed by National Grid demonstrating the application can be accepted pursuant to Section 55 of the Planning Act 2008.
Volume 2 Plans, Drawings and Sections	Contains relevant plans for the Project as required by the Infrastructure Planning (Applications: Prescribed Forms and Procedure) Regulations 2009 (APFP Regulations), including the Location and Master Key Plan, Land Plans, Works Plans, Traffic Regulation Order Plans, Access, Rights of Way and Public Navigation Plans, Design and Layout plans, Elevation Drawings, Special Category and Crown Land Plans, Trees and Hedgerows to be Removed or Managed Plans and the Open Access Land Plans. This section is additionally supported by a Guide to the Plans.
Volume 3 Draft Development Consent Order	Contains the draft Development Consent Order (DCO) providing the legal powers National Grid is seeking, together with an Explanatory Memorandum explaining the provisions of the DCO, a Validation Report and an editable word version of the DCO.

Document Volume	Context
Volume 4 Compulsory Acquisition Information	Contains the Statement of Reasons providing justification for the use of legal powers of compulsory acquisition, the Funding Statement providing information on funding for the Project, and details of the land interests required for the Project by way of the Book of Reference and the Pre-Application Land and Rights Negotiations Tracker.
Volume 5 Reports and Statements	Contains the Consultation Report and its associated appendices as required by S37(3)(c) of the Planning Act 2008. Additionally, a Site Visit Guidance Document, a Habitats Regulation Assessment, Statement of Statutory Nuisance, Consents and Licences Required Under Other Legislation, Planning Statement, Policy Compliance Document, Potential Main Issues for Examination, the draft Statements of Common Ground, the National Landscapes: Duty to Further the Purposes Report, the Details of Associated Development and a Design Development Report.
Volume 6 Environmental Statement	Provides environmental information, reports and an assessment of the likely significant effects of the Project, as well as a description of the mitigation measures.
Volume 7 Other Documents	Contains additional documents and reports considered by National Grid to be required to support the application in accordance with Regulation 5 (2)(q) of the APFP Regulations. This Volume includes a Biodiversity Net Gain Report, the Outline Code of Construction Practice, Outline Construction Traffic Management Plan, Outline Landscape and Ecological Management Plan, Outline Public Rights of Way Management Plan, Electronic and Magnetic Field Compliance Report, Flood Risk Assessment, Water Framework Directive Assessment, Transport Assessment, Visualisations, Equality Impact Assessment, Design and Access Statement, Design Approach for Site Specific Infrastructure, Strategic Options Backcheck and Review, the 2022 Corridor and Preliminary Routeing and Siting Study, the 2023 Strategic Options Backcheck Review, the 2023 and 2024 Design Development Reports for the Project.

- 1.3.2 Each volume has been colour-coded for ease of reference. The corresponding colour is displayed on the cover of each document within this Application to convey the volume it forms part of. The content of each volume is described in Section 2 of this document.

1.4 Document Referencing

- 1.4.1 The structure of references and numbering within this Guide to the Application is based on the Planning Inspectorate’s Nationally Significant Infrastructure Projects: Advice on the Preparation and Submission of Application Documents, specifically in Annex A, published in August 2024, and does not reflect all of the modifications or updates introduced in the January 2025 version. Due to the nature of the Project, there are a number of gaps in the sequencing where certain documents outlined in the guidance were not applicable to the Project. In these instances, ‘*document numbers not used*’ is stated within this guidance document.
- 1.4.2 Each submission deliverable has its own individual document reference number to help the reader navigate the application documents. The documents submitted follow a consistent referencing format, e.g. 1.1, 1.2, 4.1, 4.2. A visual example of this referencing format is provided by Figure 1.1.
- 1.4.3 In some instances where a further level of distinction is required, an additional number may be used. For example, due to the number of Statements of Common Ground, an additional number is used. The numbers for the Statements of Common Ground range from 5.9.1. to 5.9.32. An example of this is represented visually by Figure 1.2.
- 1.4.4 Some documents, such as drawings, have a two-digit reference number but include multiple sections, for example the number 2.4 covers the ‘Traffic Regulation Order Plans’ but with each section assigned a letter A-H.
- 1.4.5 Each chapter of the Environmental Statement may have its own appendices or figures and these are allocated an ‘A’ or ‘F’ number. For example, Appendix 1.1: Competent Experts Evidence of Chapter 1 of the Environmental Statement is allocated the reference 6.1.A1. A visual example of this layout is shown by Figure 1.3.
- 1.4.6 All documents will be submitted as Revision (A), with updated documents identified as Revision (B), (C), (D) etc. and will supersede documents previously submitted by the Applicant.
- 1.4.7 Table 1.2 and Figure 1.1 to Figure 1.3 provide an example of the document referencing system.

Table 1.2 Document Referencing

Description	
Volume	Documents are grouped into a ‘volume’ of related documents with similar themes. The examples shown by Figure 1.1 and Figure 1.3 is Volume 6 covering the ‘Environmental Statement’. Each Volume is colour coded for easy navigation. Figure 1.2 shows an example from Volume 5 ‘Reports and Statements’
Document Title	Each document has a document title that corresponds with a particular document reference number. The examples shown by Figure 1.1 and Figure 1.3 are taken from the Environmental Statement.

	Description
Document No.	Each document has a unique two-digit reference number for navigation, the example shown by Figure 1.1 is '6.1'. The first digit identifies the volume to which the document relates, the second to the document itself. In some instances where a further category is required, a third number may be used, shown by Figure 1.2.
Figures & Appendices	Some documents have additional appendices that accompany them, these are allocated a letter A, B, C etc. Figures and appendices that support the Environmental Statement are allocated an A or F number. An example of this is shown by Figure 1.3.

Figure 1.1 Example 1 (two-digit reference number)

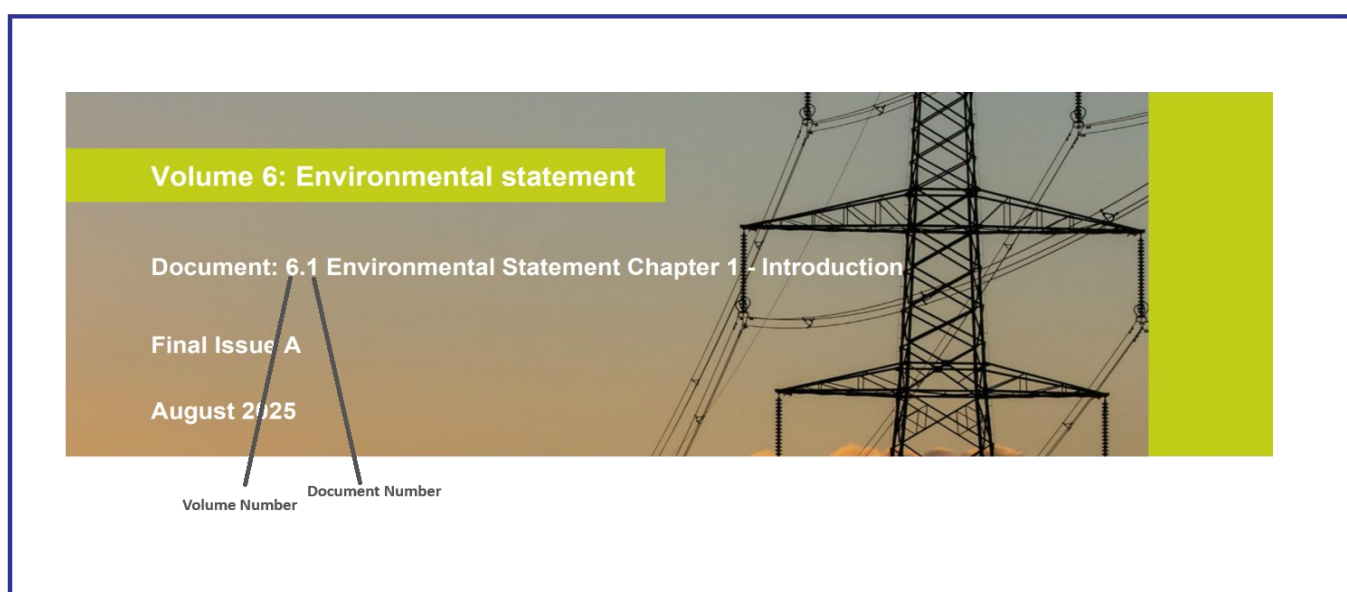


Figure 1.2 Example 2 (three-digit reference number)

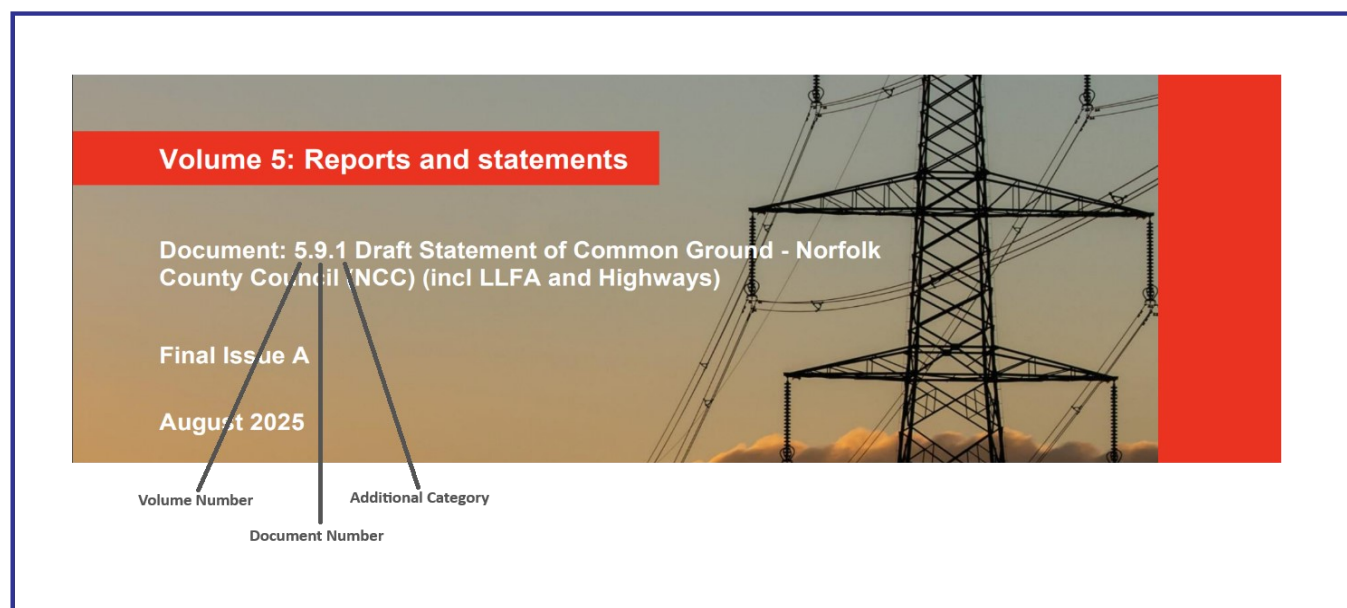
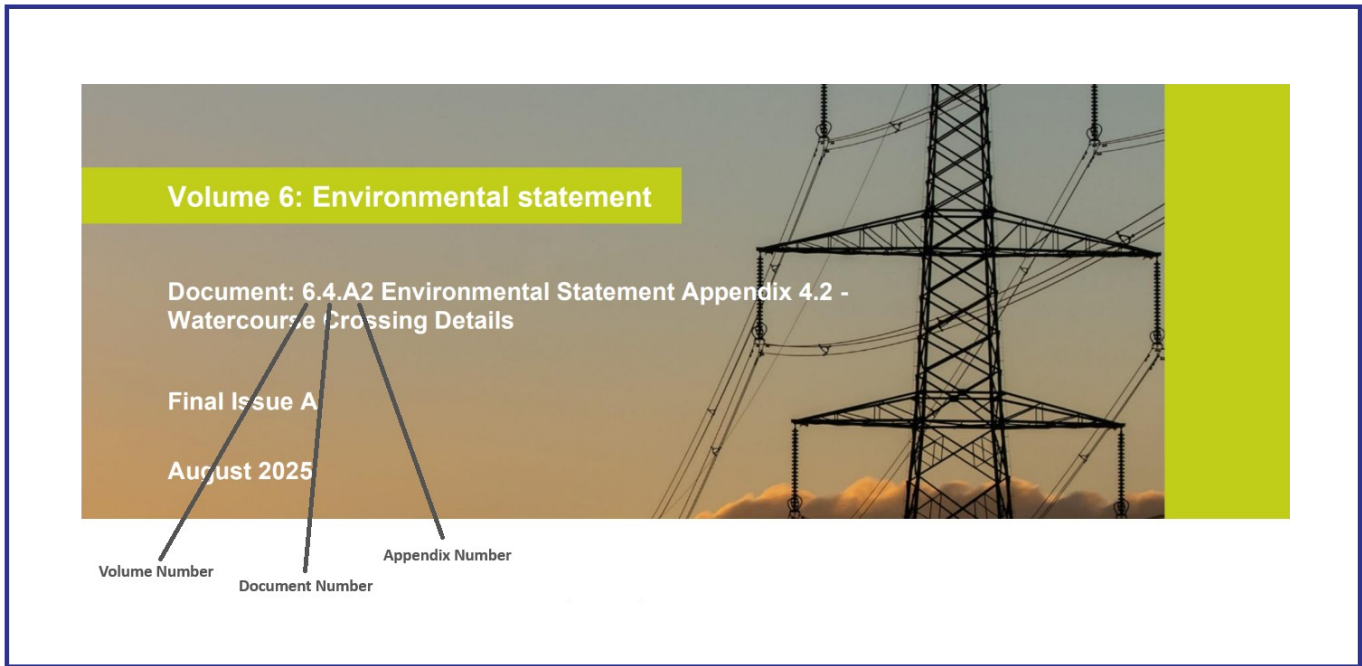


Figure 1.3 Example 3 (two-digit reference with figures or appendices)



2. Application Volumes

2.1 Overview

- 2.1.1 The documents, reports and plans that make up the Application have been split into seven volumes, as listed below. Regulation 5 of the APFP Regulations sets out the accompanying documentation required to support the Application. The documentation has been prepared in accordance with Advice on the Preparation and Submission of Application Documents, specifically in Annex A, published in August 2024.

2.2 Volume 1: Application Forms

- 2.2.1 This volume sets out the overarching Project information and documents provided in accordance with application administrative requirements.

Volume Contents

- 2.2.2 The following documents are contained within this volume:
- **1.1 Application Form** – this is the prescribed application form required by Section 37(3)(b) of the Planning Act 2008 and Regulation 5 of the APFP, providing key information about the Applicant, the Project and documents that have been submitted in the prescribed format;
 - **1.2 Application Cover Letter** – setting out the subject of the Application and supporting documentation enclosed;
 - **1.3 Guide to the Application (this document)** – describing the documents and reports contained within the Application. Its purpose is to provide an overview of the application structure and principal contents;
 - **1.4 Copies of Newspaper Notices** – used to publicise consultation;
 - **1.5 Pre-Application Programme Document** – setting out the timetable and describing the activities that enabled an effective pre-application process, and consultation with various parties. The document has been updated at key milestones throughout the pre-application process;
 - **1.6 Section 55 Acceptance of Applications Checklist** – setting out the circumstances in which the Planning Inspectorate may accept the application for development consent. Required under section 37 of the Planning Act 2008.

2.3 Volume 2: Plans, Drawings and Sections

2.3.1 This volume contains plans that show where and how the works would take place.

Volume Contents

2.3.2 The following documents are contained within this volume:

- **2.0 Guide to the Plans** – explains the role and content of the different plans and drawings within Volume 2 of the Development Consent Order (DCO) application;
- **2.1 Location and Master Key Plan** – shows a very high-level overview of the Project and its geographic location, including the Order Limits which defines the area within which the Project would be constructed, including all the land required to deliver the project;
- **2.2 Land Plans** – showing the types of statutory land powers (compulsory acquisition or temporary possession) which National Grid intends to seek for the Order Land, within the Order Limits. The land to which these powers relate has been split into land plots and given a unique plot number that can be found within the Book of Reference (Application Document 4.3). The plans identify the classes of land powers sought within the application, and also the matters set out in the APFP Regulation 5(2)(i). The following make up Application Document 2.2 Land Plans:
 - 2.2 Land Plans – Section A - South Norfolk Council
 - 2.2 Land Plans – Section B - Mid Suffolk District Council
 - 2.2 Land Plans – Section C - Babergh District Council, Colchester City Council and Tendring District Council
 - 2.2 Land Plans – Section D - Colchester City Council
 - 2.2 Land Plans – Section E - Braintree District Council
 - 2.2 Land Plans – Section F - Chelmsford City Council and Brentwood Borough Council
 - 2.2 Land Plans – Section G - Brentwood Borough Council and Basildon Borough Council (and part of Chelmsford City Council)
 - 2.2 Land Plans – Section H - Thurrock Council
- **2.3 Works Plans** – shows the main permanent aspects of the Project that are described in Schedule 1 of the draft Development Consent Order (DCO) (document reference 3.1). The plans show the alignment centrelines of the linear works that make up the application. The following make up Application Document 2.3 Work Plans:
 - 2.3 Work Plans – Section A - South Norfolk Council
 - 2.3 Work Plans – Section B - Mid Suffolk District Council
 - 2.3 Work Plans – Section C - Babergh District Council, Colchester City Council and Tendring District Council
 - 2.3 Work Plans – Section D - Colchester City Council

- 2.3 Work Plans – Section E - Braintree District Council
- 2.3 Work Plans – Section F - Chelmsford City Council and Brentwood Borough Council
- 2.3 Work Plans – Section G - Brentwood Borough Council and Basildon Borough Council (and part of Chelmsford City Council)
- 2.3 Work Plans – Section H - Thurrock Council
- **2.4 Traffic Regulation Order Plans** – shows the extent of the proposed Traffic Regulation Orders (TROs) and sections of the road / street that may need to be subject to a TRO while works are undertaken, such as where restrictions or traffic management would be required to facilitate the construction and maintenance of the Project. The following make up Application Document 2.4 Traffic Regulation Order Plans:
 - 2.4 Traffic Regulation Order Plans – Section A - South Norfolk Council
 - 2.4 Traffic Regulation Order Plans – Section B - Mid Suffolk District Council
 - 2.4 Traffic Regulation Order Plans – Section C - Babergh District Council, Colchester City Council and Tendring District Council
 - 2.4 Traffic Regulation Order Plans – Section D - Colchester City Council
 - 2.4 Traffic Regulation Order Plans – Section E - Braintree District Council
 - 2.4 Traffic Regulation Order Plans – Section F - Chelmsford City Council and Brentwood Borough Council
 - 2.4 Traffic Regulation Order Plans – Section G - Brentwood Borough Council and Basildon Borough Council (and part of Chelmsford City Council)
 - 2.4 Traffic Regulation Order Plans – Section H - Thurrock Council
- **2.5 Access, Rights of Way and Public Rights of Navigation Plans** – shows the temporary and permanent access points from the public highway, as well as the Public Rights of Way (PROWs), roads and streets which are required to be temporarily closed or permanently stopped-up (and, where applicable, identified diversion routes) in order to construct, operate or maintain the Project. The plans also show locations where the Project will interfere with existing public rights of navigation. The following make up Application Document 2.5 Access, Rights of Way and Public Rights of Navigation Plans:
 - 2.5 Access, Rights of Way and Public Rights of Navigation Plans – Section A - South Norfolk Council
 - 2.5 Access, Rights of Way and Public Rights of Navigation Plans – Section B - Mid Suffolk District Council
 - 2.5 Access, Rights of Way and Public Rights of Navigation Plans – Section C - Babergh District Council, Colchester City Council and Tendring District Council
 - 2.5 Access, Rights of Way and Public Rights of Navigation Plans – Section D - Colchester City Council
 - 2.5 Access, Rights of Way and Public Rights of Navigation Plans – Section E - Braintree District Council

- 2.5 Access, Rights of Way and Public Rights of Navigation Plans – Section F - Chelmsford City Council and Brentwood Borough Council
- 2.5 Access, Rights of Way and Public Rights of Navigation Plans– Section G - Brentwood Borough Council and Basildon Borough Council (and part of Chelmsford City Council)
- 2.5 Access, Rights of Way and Public Rights of Navigation Plans – Section H - Thurrock Council
- **2.6 Design and Layout Plans** – a suite of illustrative or indicative design drawings that provide details on the size, layouts and heights of the proposed new and existing infrastructure such as overhead line, substations, Cable Sealing End compounds. They also present illustrative examples of key components of the temporary construction phase such as temporary compounds, works areas and access. The following make up Application Document 2.6 Design and Layout Plans:
 - 2.6.1 Design and Layout Plans – Subs and Cables
 - 2.6.2 Design and Layout Plans – Overhead Lines
 - 2.6.3 Design and Layout Plans – Traffic and Transport
- **2.7 Elevation Drawings (Overhead Line Profiles)** – a detailed and annotated example of an overhead line profile explaining how the profiles should be interpreted. This describes what the different aspects of the profile are showing, what the various lines represent and what the different annotations are referring to;
- **2.8 to 2.13** – *Document numbers not used*
- **2.14 Special Category and Crown Land Plans** – show any land that is defined as Special Category Land or Crown Land, which is subject to powers of compulsory acquisition. Special Category Land is defined as the land identified as forming part of a common, open space, inalienable National Trust land, or a fuel or field garden allotment. Crown Land is defined as the land where the Crown or Crown Bodies own land, or hold an interest in land;
- **2.15 Open Access Land Plans** - indicate areas where public access rights over Open Access Land may need to be temporarily suspended during construction, maintenance or decommissioning works related to the Project, pursuant to Article 53 and Schedule 15 to the draft Order;
- **2.16 Trees and Hedgerows to be Removed and or Managed Plans** – show the trees and hedgerows that are potentially affected by the Project. The following make up Application Document 2.16 Trees and Hedgerows to be Removed or Managed Plans:
 - 2.16 Trees and Hedgerows to be Removed and or Managed Plans – Section A - South Norfolk Council
 - 2.16 Trees and Hedgerows to be Removed and or Managed Plans – Section B - Mid Suffolk District Council
 - 2.16 Trees and Hedgerows to be Removed and or Managed Plans – Section C - Babergh District Council, Colchester City Council and Tendring District Council

- 2.16 Trees and Hedgerows to be Removed and or Managed Plans – Section D - Colchester City Council
- 2.16 Trees and Hedgerows to be Removed and or Managed Plans – Section E - Braintree District Council
- 2.16 Trees and Hedgerows to be Removed and or Managed Plans – Section F - Chelmsford City Council and Brentwood Borough Council
- 2.16 Trees and Hedgerows to be Removed and or Managed Plans – Section G - Brentwood Borough Council and Basildon Borough Council (and part of Chelmsford City Council)
- 2.16 Trees and Hedgerows to be Removed and or Managed Plans – Section H - Thurrock Council.

2.4 Volume 3: Draft Development Consent Order

- 2.4.1 National Grid requires development consent from the Secretary of State to construct, operate and maintain the Project. This volume contains details of the legal powers being sought by the Applicant.

Volume Contents

- 2.4.2 The following documents are contained within this volume:

- **3.1 Draft Development Consent Order (DCO)** – containing a list of the works as well as the legal powers that National Grid is seeking to enable the construction, operation and maintenance of the Project. It is comprised of 62 articles and 19 schedules, which are listed below. The draft DCO also contains a series of 'Requirements', like planning conditions, which set out various controls if consent is granted:
 - Schedule 1: Authorised Development
 - Schedule 2: Plans
 - Schedule 3: Requirements
 - Schedule 4: Discharge of Requirements
 - Schedule 5: Streets Subject to Street Works
 - Schedule 6: Streets Subject to Alteration of Layout
 - Schedule 7: Streets or Public Rights of Way to be Permanently Stopped Up
 - Schedule 8: Streets or Public Rights of Way to be Temporarily Closed
 - Schedule 9: Access to Works
 - Schedule 9A: Works for the Protection of UKOP Apparatus
 - Schedule 10: Modification of Compensation and Compulsory Purchase Enactments for Creation of New Rights
 - Schedule 11: Land of which Temporary Possession may be Taken
 - Schedule 12: *Schedule not used*

- Schedule 13: Traffic Regulation Orders
- Schedule 14: Trees Subject to Tree Preservation Orders
- Schedule 15: Temporary Suspension of Public Access to Access Land
- Schedule 16: Protective Provisions
- Schedule 17: Public General Legislation
- Schedule 18: Amendment of Local Legislation
- Schedule 19: Certified Documents
- **3.2 Explanatory Memorandum** – explains the purpose and effect of each article of, and the Schedules to, the draft DCO;
- **3.3 Draft DCO – Validation Report for the DCO** – confirming that the draft DCO conforms to the current Statutory Instrument template, as required by the Planning Inspectorate’s Advice Note 15: Drafting Development Consent Orders published in 2018;
- **3.4 Draft DCO – Editable Word Version** – A copy of the draft DCO in an editable Word version to assist the Examining Authority.

2.5 Volume 4: Compulsory Acquisition Information

- 2.5.1 This volume provides evidence of why National Grid needs to be able to exercise powers of compulsory acquisition to construct, operate and/or maintain the Project.

Volume Contents

- 2.5.2 The following documents are contained within this volume:
- **4.1 Statement of Reasons** – explaining that there is a compelling case in the public interest which would justify National Grid’s exercise of powers of compulsory acquisition in order to acquire land and rights permanently and to use land temporarily to enable it to construct, operate and maintain the Project. This document is supplemented by:
 - 4.1 Appendix A – Compulsory Acquisition Schedule
 - 4.1 Appendix B – Schedule of Negotiations
 - 4.1 Appendix C – Special Category Land Report
 - **4.2 Funding Statement** – explaining how the Project is to be funded, and how the acquisition of land rights in, on or over land, which are necessary to build the Project will be funded;
 - **4.3 Book of Reference** – contains land referencing information for land proposed to be used or acquired for the Project in accordance with regulatory requirements. It is comprised of eight chapters, mirroring sections A to H. Each chapter will include five parts:
 - **Part 1:** Categories 1 and 2 – contains the names and addresses for service of each person within Categories 1 and 2 as set out in Section 57 (categories for purposes of Section 56(2)(d)) of the Planning Act 2008 in respect of any land

which it is proposed shall be subject to powers of compulsory acquisition, rights to use land, including the right to including the right to attach brackets or other equipment to buildings or rights to carry out protective works to buildings

- **Part 2:** Category 3: Section 10 Compulsory Purchase Act 1965 – contains the names and addresses for service of each person within Category 3 as set out in Section 57 of the Planning Act 2008
 - **Part 3:** Easements or other private rights proposed to be interfered with, suspended or extinguished – contains the names of all those entitled to enjoy easements or other private rights over land (including private rights of navigation over water) which it is proposed shall be extinguished, suspended or interfered with
 - **Part 4:** Crown Interests – specifies the owner of any Crown interest in the land which is proposed to be used for the purposes of the order for which application is being made
 - **Part 5:** Special Category Land – specifies land the acquisition of which is subject to special parliamentary procedure; which is “special category land” for the purposes of Sections 131 and 132 of the Planning Act 2008 and which is replacement land
- **4.4 Pre-application Land and Rights Negotiations Tracker** – A schedule of discussions and engagement with landowners prior to submission of the Application.
 - **4.5 Pre-application Land and Rights Negotiations Tracker- Editable Excel Version** – A copy of the Pre-application Land and Rights Negotiations Tracker in an editable excel version.

2.6 Volume 5: Reports and Statements

2.6.1 This volume contains reports and statements required in support of the Application.

Volume Contents

2.6.2 The following documents are contained within this volume:

- **5.1 Consultation Report** – Section 37(3)(c) of the Planning Act 2008 requires that applications for development consent are accompanied by a Consultation Report. The Consultation Report and its supporting appendices explain how National Grid has consulted on the Project, and summarises the responses received and explains how National Grid has had regard to those responses. The Consultation Report explains how National Grid has complied with the consultation requirements set out in the Planning Act 2008, the APFP Regulations and the Infrastructure Planning (Environmental Impact Assessment) Regulations 2017 (EIA Regulations). The preparation of the Consultation Report has also taken into account statutory and non-statutory guidance including guidance set out in ‘Planning Act 2008: guidance on the pre-application process’ published by the Department of Communities and Local Government in March 2015 and, within reason, ‘Planning Act 2008: pre-application stage for Nationally Significant Infrastructure Projects’ published by the Department of Levelling Up, Housing and Communities in April 2024 (for the targeted consultation) and ‘Nationally significant infrastructure projects: Advice on the consultation report’ by the

Planning Inspectorate in August 2024. The Consultation Report comprises a main report and 14 separate appendices. The appendices supporting Application Document 5.1 Consultation Report are listed below:

- 5.1 Appendix A: Meetings and correspondence with stakeholders
- 5.1 Appendix B: 2022 non-statutory consultation
- 5.1 Appendix C: 2023 non-statutory consultation
- 5.1 Appendix D: Infrastructure planning (EIA regulations) 2017 regulation 8 letter to the Inspectorate and acknowledgement (s46)
- 5.1 Appendix E: Statement of Community Consultation (SoCC) and supporting evidence
- 5.1 Appendix F: List of prescribed consultees identified and consulted during statutory consultation and Section 42(1) letter sent
- 5.1 Appendix G: Section 42(1)(d) consultees and supporting information
- 5.1 Appendix H: Section 47 and Section 48 notices
- 5.1 Appendix I: Section 47 Consultation Materials
- 5.1 Appendix J: Land referencing methodology
- 5.1 Appendix K: Targeted Consultation 2025
- 5.1 Appendix L: Further Landowner Consultation June 2025
- 5.1 Appendix M: Adequacy of Consultation Milestone
- 5.1 Appendix N: Legal Opinions
- **5.2 Route Drive: Site Visit Guidance Document** – A navigation document prepared to assist the Planning Inspectorate in visiting the key locations along the route. It provides suggested points of interest and viewpoints from the public realm, with guidance for travelling between the locations;
- **5.3 Habitats Regulations Assessment Report** – presenting the Habitats Regulations Assessment (HRA) undertaken for the Project in accordance with the Habitats Regulations and provides sufficient information to enable the Secretary of State to make an appropriate assessment in relation to European Sites as required by Regulation 5(2)(g) of the APFP Regulations. This report has been prepared with reference to 'Advice note: nationally significant infrastructure projects: advice on Habitats Regulations Assessments' by the Planning Inspectorate in September 2024 and in consultation with Natural England. It comprises Stage 1: Screening and Stage 2: Appropriate Assessment;
- **5.4 Statement of Statutory Nuisance** – setting out the matters in Section 79(1) of the Environmental Protection Act 1990 in respect to statutory nuisance, the potential for the Project to cause statutory nuisance and the measures that have been incorporated into the Project to mitigate any such potential nuisances. This document has been submitted in accordance with Regulation 5(2)(e) of the APFP Regulations;
- **5.5 Consents and Licences Required Under Other Legislation** – a strategy for obtaining consents, licences and associated agreements, in addition to the DCO, that are needed to construct and/or operate the Project;

- **5.6 Planning Statement** – presenting and assessing the Project in its planning policy context, considering the benefits of the Project against any expected impacts;
- **5.7 Policy Compliance Document** – a schedule of all the relevant local and national planning policies, along with a statement setting out how the Project complies with these policies;
- **5.8 Potential Main Issues for Examination** – A report containing a schedule of potential main issues that remain unresolved prior to submission of the application;
 - 5.8 Appendix A – Stakeholder Responses
- **5.9 Draft Statements of Common Ground (Individual Statements: 5.9.1 to 5.9.32)** – Statements of Common Ground outlining matters of agreement between the Applicant and key stakeholders, as well as where agreement has not been reached at the time of submitting the Application. Includes a summary document providing an overview of all SoCGs.
 - 5.9.1 - Norfolk County Council (NCC) (incl LLFA and Highways)
 - 5.9.2 - Suffolk County Council (SCC) (incl LLFA and Highways)
 - 5.9.3 - Essex County Council (ECC) (incl LLFA and Highways)
 - 5.9.4 - Thurrock Council (TC) (incl LLFA and Highways)
 - 5.9.5 - South Norfolk District Council
 - 5.9.6 - Babergh and Mid Suffolk District Council
 - 5.9.7 - Tendring District Council
 - 5.9.8 - Colchester City Council
 - 5.9.9 - Braintree District Council
 - 5.9.10 - Chelmsford City Council
 - 5.9.11 - Brentwood Borough Council
 - 5.9.12 - Basildon Borough Council
 - 5.9.13 - Natural England
 - 5.9.14 - Historic England
 - 5.9.15 - Environment Agency
 - 5.9.16 - Combined IDBs – Water Management Alliance - Letter
 - 5.9.17 - Norfolk Wildlife Trust - Letter
 - 5.9.18 - Suffolk Wildlife Trust - Letter
 - 5.9.19 - Essex Wildlife Trust - Letter
 - 5.9.20 - National Highways - Letter
 - 5.9.21 - *Document number not used*
 - 5.9.22 - Barnards Farm Airfield - Letter

- 5.9.23 - Thurrock Airfield - Letter
- 5.9.24 - Network Rail - Letter
- 5.9.25 - Innova Battery Storage Systems - Letter
- 5.9.26 - Anglian Water - Letter
- 5.9.27 - Essex and Suffolk Water - Letter
- 5.9.28 - Exolum - Letter
- 5.9.29 - National Gas Transmission - Letter
- 5.9.30 - Scottish Power Renewables (EA3) - Letter
- 5.9.31 - Fairwinds Solar (Lightsource BP/Vantage) - Letter
- 5.9.32 - Brook Farm aerodrome – Letter
- **5.10 National Landscapes: Duty to Seek to Further the Purposes Report (s85 Countryside and Rights of Way Act 2000)** – sets out the Applicant’s consideration of its duty to seek to further the purposes of the National Landscape, which is to ‘conserve and enhance natural beauty’ in accordance with Section 85 of the Countryside and Rights of Way Act 2000 (CRoW Act);
- **5.11 to 5.13** - *Document numbers not used*
- **5.14 Details of Associated Development, with references to documents** – identifies (with references to application documents) those development activities that have a direct relationship with, and are subordinate to, the principal development and which are included in the DCO application as associated development. Associated development is defined by the Planning Act 2008 and is not part of the principal works but is essential for supporting and enabling them;
- **5.15 Design Development Report** – presenting the main changes that have been made to the Project since the completion of statutory consultation in 2024 and the various targeted consultations in 2025, explaining the main reasons for change to routeing and siting of the Project;

Volume 6: Environmental Statement

- 2.7.1 This volume contains the Environmental Statement for the Project. The Environmental Statement sets out the results of the Environmental Impact Assessment (EIA) undertaken to understand the likely significant effects of the Project on the environment and any associated mitigation requirements.
- 2.7.2 Volume 6 is further divided into three sub-volumes to accord with Annex A of the *NSIP: Advice on the Preparation and Submission of Application Documents: August 2024*. Volume 1 comprises the ‘Introductory chapters’, Volume 2, the ‘Aspect chapters’ and Volume 3 ‘Other environmental statement documents and technical appendices’.

Environmental Statement – Volume 1 (Introductory Chapters)

2.7.3

The following documents are contained within this volume:

- **6.1 Environmental Statement: Chapter 1 (Introduction)** – providing an overview and need for the Project, the purpose and structure of the EIA, and the contents of the Environmental Statement;
 - 6.1.A1 - Appendix 1.1 - Competent Experts Evidence
 - 6.1.F1 - Figure 1.1 - Site Location Plan and Project Sections
- **6.2 Environmental Statement: Chapter 2 (Key Legislation and Planning Policy Context)** – a review of key environmental legislation and planning policy relevant to the Project;
- **6.3 Environmental Statement: Chapter 3 (Alternatives)** – A summary of the main reasonable alternatives that have been considered on the Project, including the strategic options and route corridors;
 - 6.3.A1 - Appendix 3.1 - Our Approach to Options Appraisal
 - 6.3.A2 - Appendix 3.2 - Our Approach to Consenting
- **6.4 Environmental Statement: Chapter 4 (Project Description)** – A description of the Project including permanent features and associated temporary works. It describes the general characteristics of the Project and outlines areas of flexibility in relation to design parameters;
 - 6.4.A1 - Appendix 4.1 - Greenhouse Gas Assessment
 - 6.4.A2 - Appendix 4.2 - Watercourse Crossing Details
 - 6.4.F1 - Figure 4.1 - Proposed Project Design
 - 6.4.F2 - Figure 4.2 - Proposed Project Design – Permanent Features
- **6.5 Environmental Statement: Chapter 5 (EIA Approach and Method)** – A description of the overall EIA methodology that has been used, including temporal durations and approach to mitigation;
 - 6.5.A1 - Appendix 5.1 - National Grid's response to the EIA Scoping Opinion
 - 6.5.A2 - Appendix 5.2 - Scope of the Assessment

Environmental Statement – Volume 2 (Aspect Chapters)

- **6.6 Environmental Statement: Chapter 6 (Agriculture and Soils)** – detailing the likely significant effects of the Project on soils and agricultural land, including the best and most versatile (BMV) land and land holdings in agricultural use;
 - 6.6.A1 - Appendix 6.1 - Agricultural Land Classification Report
 - 6.6.A2 - Appendix 6.2 - Agricultural Landholding Information
 - 6.6.F1 - Figure 6.1 - Agriculture and Soils Study Area
 - 6.6.F2 - Figure 6.2 - Provisional Agricultural Land Classification (ALC) Mapping
 - 6.6.F3 - Figure 6.3 - Detailed Agricultural Land Classification (ALC) Mapping

- 6.6.F4 - Figure 6.4 - Agri-Environmental Schemes
- 6.6.F5 - Figure 6.5 - Forestry and Woodland Grant Schemes
- 6.6.F6 - Figure 6.6 - Soil Association Map
- **6.7 Environmental Statement: Chapter 7 (Air Quality)** – detailing the likely significant effects of the Project on air quality including effects from dust;
 - 6.7.A1 - Appendix 7.1 - Air Quality Assessment Methodology
 - 6.7.A2 - Appendix 7.2 - Air Quality Baseline Data
 - 6.7.A3 - Appendix 7.3 - Air Quality Assessment Results
 - 6.7.F1 - Figure 7.1 - Air Quality Study Area and Constraints
 - 6.7.F2 - Figure 7.2 - Air Quality Background Concentrations (2023)
 - 6.7.F3 - Figure 7.3 - Air Quality Background Concentrations (2030)
 - 6.7.F4 - Figure 7.4 - Air Quality Construction Dust Study Area
 - 6.7.F5 - Figure 7.5 - Air Quality Affected Road Network
 - 6.7.F6 - Figure 7.6 - Air Quality Verification
 - 6.7.F7 - Figure 7.7 - Air Quality Generators
- **6.8 Environmental Statement: Chapter 8 (Ecology and Biodiversity)** – detailing the likely significant effects of the Project on local national and international sites designated for biodiversity, protected/notable habitats and species, species listed under s41 of the Natural Environment and Rural Communities Act 2006, other noticeable mammals, terrestrial ecosystems and invasive non-native species
 - 6.8.A1 - Appendix 8.1 - Habitat Report
 - 6.8.A2 - Appendix 8.2 - National Vegetation Classification Report
 - 6.8.A3 - Appendix 8.3 - Hedgerows Regulations Report
 - 6.8.A4 - Appendix 8.4 - Aquatic Report
 - 6.8.A5 - Appendix 8.5 - Terrestrial Invertebrate Report
 - 6.8.A6 - Appendix 8.6 - Reptile Report
 - 6.8.A7 - Appendix 8.7 - Breeding Bird Report (confidential)
 - 6.8.A8 - Appendix 8.8 - Wintering and Passage Bird Report
 - 6.8.A9 - Appendix 8.9 - Bat Roost Report
 - 6.8.A10 - Appendix 8.10 - Bat Activity Report
 - 6.8.A11 - Appendix 8.11 - Bat Radio-tracking Report
 - 6.8.A12 - Appendix 8.12 - Hazel Dormouse Report
 - 6.8.A13 - Appendix 8.13 - Otter and Water Vole Report (confidential)
 - 6.8.A14 - Appendix 8.14 - Species of Principal Importance Report

- 6.8.A15 - Appendix 8.15 - Badger Report (confidential)
- 6.8.A16 - Appendix 8.16 - Designated Sites
- **6.9 Environmental Statement: Chapter 9 (Contaminated Land, Geology and Hydrogeology)** – detailing the likely significant effects of the Project on geology and hydrogeology including contaminated land and the receptors that could be affected by existing contaminants in the soil, geology including designated geological sites and minerals and hydrogeology including groundwater quality, levels and flows;
 - 6.9.A1 - Appendix 9.1 - Baseline Information and Preliminary Contamination Risk Assessment
 - 6.9.A2 - Appendix 9.2 - Qualitative Minerals Resource and Infrastructure Assessment
 - 6.9.A3 - Appendix 9.3 - Groundwater Baseline and Qualitative Groundwater Risk Assessment
 - 6.9.A4 - Appendix 9.4 - Hydrogeological Risk Assessment
 - 6.9.F1 - Figure 9.1 - Superficial Geology
 - 6.9.F2 - Figure 9.2 - Bedrock Geology
 - 6.9.F3 - Figure 9.3 - Mineral Safeguarding Areas, Mineral Consultation Areas, and Minerals Infrastructure
 - 6.9.F4 - Figure 9.4 - Geologically Designated Sites
 - 6.9.F5 - Figure 9.5 - Hydrogeology and Hydrogeological Receptors
 - 6.9.F6 - Figure 9.6 - Sites with a Moderate or Above Risk Classification
- **6.10 Environmental Statement: Chapter 10 (Health and Wellbeing)** – detailing the likely significant effects of the Project on health and wellbeing;
 - 6.10.A1 - Appendix 10.1 - Health and Wellbeing Baseline Statistics
 - 6.10.F1 - Figure 10.1 - Health and Wellbeing Study Areas
 - 6.10.F1 - Figure 10.2 - Health and Wellbeing Receptors
 - 6.10.F2 - Figure 10.3 - Indices of Multiple Deprivation Score
 - 6.10.F3 - Figure 10.4 - Percentage of Study Area identifying as female
 - 6.10.F4 - Figure 10.5 - Percentage of Study Area identifying as non-white, including Asian, black, mixed ethnic and other
 - 6.10.F5 - Figure 10.6 - Percentage of Study Area with English as their main language
 - 6.10.F6 - Figure 10.7 - Percentage of Study Area economically active
 - 6.10.F7 - Figure 10.8 - Percentage of Study Area with a qualification level 2 or lower
 - 6.10.F8 - Figure 10.9 - Population density of the Study Area

- 6.10.F9 - Figure 10.10 - Percentage of the Study Area considered disabled under the Equality Act
- 6.10.F10 - Figure 10.11 - Adult prevalence of overweight (including obesity) in the Study Area
- 6.10.F11 - Figure 10.12 - Year 6 prevalence of overweight (including obesity) in the Study Area
- 6.10.F12 - Figure 10.13 - Population within a 10 minute walk of green or blue space
- 6.10.F13 - Figure 10.14 - Crime rate for public order crimes per 100,000
- **6.11 Environmental Statement: Chapter 11 (Historic Environment)** – detailing the likely significant effects of the Project on the historic environment including heritage assets comprising archaeological remains, built heritage assets and historic landscape assets;
 - 6.11.A1 - Appendix 11.1 - Historic Environment Baseline Report
 - 6.11.A2 - Appendix 11.2 - Historic Environment Assessment Tables
 - 6.11.A3 - Appendix 11.3 – EACN Substation Geophysical Survey Report
 - 6.11.A4 - Appendix 11.4 - Geophysical Survey Results Report
 - 6.11.A5 - Appendix 11.5 - Trial Trenching Results Report
 - 6.11.A6 - Appendix 11.6 - Geoarchaeological Monitoring of Ground Investigation Works Report
 - 6.11.A7 - Appendix 11.7 - Assessment of Harm to Designated Heritage Assets
 - 6.11.F1 - Figure 11.1 - Historic Environment Study Area
 - 6.11.F2 - Figure 11.2 - Designated Heritage Assets Assessed in the ES Chapter
 - 6.11.F3 - Figure 11.3 - Non-Designated Heritage Assets Assessed in the ES Chapter
 - 6.11.F4 - Figure 11.4 - Geophysical Survey and Archaeological Trial Trenching Priority Areas
 - 6.11.F5 - Figure 11.5 - Historic Environment and LVIA Viewpoint Locations
- **6.12 Environmental Statement: Chapter 12 (Hydrology, Land Drainage and Flood Risk)** – detailing the assessment of the likely significant effects on hydrology, land drainage and flood risk
 - 6.12.A1 - Appendix 12.1 - Hydrology, Land Drainage and Flood Risk Baseline Data
 - 6.12.F1 - Figure 12.1 - Study Area and Water Environment Features
 - 6.12.F2 - Figure 12.2 - Flood Risk Areas
 - 6.12.F3 - Figure 12.3 - Water Framework Surface Waterbody Status

- **6.13 Environmental Statement: Chapter 13 (Landscape and Visual)** – detailing the likely significant effects of the Project on landscape and visual receptors
 - 6.13.A1 - Appendix 13.1 - Landscape and Visual Methodology
 - 6.13.A2 - Appendix 13.2 - Landscape Baseline and Assessment
 - 6.13.A3 - Appendix 13.3 - Visual Baseline and Assessment
 - 6.13.A4 - Appendix 13.4 - Residential Visual Amenity Assessment
 - 6.13.A5 - Appendix 13.5 - National Landscape Assessment Study
 - 6.13.A6 - Appendix 13.6 - Arboricultural Impact Assessment (AIA)
 - 6.13.F1 - Figure 13.1 - LVIA Study Area and Landscape Designations
 - 6.13.F2 - Figure 13.2 - Landform and Drainage
 - 6.13.F3 - Figure 13.3 - Trees and Woodland
 - 6.13.F4 - Figure 13.4 - Settlements and Infrastructure
 - 6.13.F5 - Figure 13.5 - National Character Areas and East of England Typology
 - 6.13.F6 - Figure 13.6 - Landscape Character Types and Landscape Character Areas
 - 6.13.F7 - Figure 13.7 - Visual Receptors and Viewpoints
 - 6.13.F8 - Figure 13.8 - ZTV of Proposed 400kV Overhead Line by Project Section (heat mapping number of structures theoretically visible version)
 - 6.13.F9 - Figure 13.9 - ZTV of Proposed 400kV Overhead Line by Project Section (proportions of structures visible version)
 - 6.13.F10 - Figure 13.10 - ZTV of Bramford Substation Extension
 - 6.13.F11 - Figure 13.11 - ZTV of Wenham Grove CSE Compound
 - 6.13.F12 - Figure 13.12 - ZTV of East Anglia Connection Node (EACN)
 - 6.13.F13 - Figure 13.13 - ZTV of Great Horkesley (EACN Side) CSE Compound
 - 6.13.F14 - Figure 13.14 - ZTV of Great Horkesley (Tilbury Side) CSE Compound
 - 6.13.F15 - Figure 13.15 - ZTV of Fairstead CSE Compounds
 - 6.13.F16 - Figure 13.16 - ZTV of Tilbury North Substation
 - 6.13.F17 - Figure 13.17 - ZTV of Tilbury North (Warley Side) CSE Compound
 - 6.13.F18 - Figure 13.18 - ZTV of Tilbury North (Tilbury Side) CSE Compound
 - 6.13.F19 - Figure 13.19 - ZTV within Dedham Vale National Landscape

- **6.14 Environmental Statement: Chapter 14 (Noise and Vibration)** – detailing the likely significant effects of the Project on noise and vibration sensitive receptors, including human receptors, and, in relation to vibration, structures and buildings;
 - 6.14.A1 - Appendix 14.1 - Construction Noise and Vibration Data
 - 6.14.A2 - Appendix 14.2 - Construction Traffic Noise Assessment
 - 6.14.A3 - Appendix 14.3 - EACN Substation Operational Noise Assessment
 - 6.14.A4 - Appendix 14.4 - Tilbury North Operational Noise Assessment
 - 6.14.A5 - Appendix 14.5 - Operational Noise from Overhead Lines
 - 6.14.F1 - Figure 14.1 - Baseline Noise Data
 - 6.14.F2 - Figure 14.2 - Construction Noise Assessment Outputs
 - 6.14.F3 - Figure 14.3 - Construction Vibration Assessment Outputs
- **6.15 Environmental Statement: Chapter 15 (Socio-Economics, Recreation and Tourism)** – detailing the likely significant effects of the Project with respect to socio-economics including tourism, recreation and land use
 - 6.15.A1 - Appendix 15.1 - Built and Other Assets within the 3 km Study Area
 - 6.15.A2 - Appendix 15.2 - Review of Aviation Impact
 - 6.15.F1 - Figure 15.1 - Socio-economics, Recreation and Tourism Study Area
 - 6.15.F2 - Figure 15.2 - Community Facilities, Businesses, Recreation and Tourism Assets
 - 6.15.F3 - Figure 15.3 - Recreational Land and Recreational Routes
- **6.16 Environmental Statement: Chapter 16 (Traffic and Transport)** – assessing the impacts of the Project on the transport network including roads, PRowS, footpaths, public bridleways, byways, railways, rivers and cycle routes;
 - 6.16.A1 - Appendix 16.1 - Engagement Undertaken Relevant to Traffic and Transport
 - 6.16.A2 - Appendix 16.2 - Traffic and Transport Baseline Conditions
 - 6.16.A3 - Appendix 16.3 - Future Baseline
 - 6.16.A4 - Appendix 16.4 - Traffic and Transport Construction Effects
 - 6.16.F1 - Figure 16.1 - Primary Access Routes
 - 6.16.F2 - Figure 16.2 - Sensitive Receptors
 - 6.16.F3 - Figure 16.3 - Personal Injury Collision Data
 - 6.16.F4 - Figure 16.4 - Traffic Counts and PRow User Survey Locations
 - 6.16.F5 - Figure 16.5 - Additional Mitigation Measures

- **6.17 Environmental Statement: Chapter 17 (Cumulative Effects)** – detailing the cumulative effects assessment for the Project. This assessment considers both the ‘intra-project’ and ‘inter-project’ effects of the Project
 - 6.17.A1 - Appendix 17.1 - Intra-project Cumulative Effects
 - 6.17.A2 - Appendix 17.2 - Long List and Short List of Other Developments
 - 6.17.A3 - Appendix 17.3 - Inter-project Cumulative Effects
 - 6.17.F1 - Figure 17.1 - Long List of ‘Other Developments’ Considered within the Cumulative Impacts Assessment
 - 6.17.F2 - Figure 17.2 - Short List of ‘Other Developments’ Considered within the Cumulative Impact Assessment
- **6.18 Environmental Statement: Chapter 18 (Summary)** – summarising the likely significant effects that are anticipated from the Project identified within the Environmental Statement.

Environmental Statement – Volume 3 (Other Environmental Statement Documents, Technical Appendices and Figures)

- **6.19 Environmental Statement: Scoping Report** – The EIA Scoping Report submitted by National Grid to the Planning Inspectorate on 7 November 2022;
- **6.20 Environmental Statement: Scoping Opinion** – The EIA Scoping Opinion adopted by the Planning Inspectorate on behalf of the Secretary of State on 14 December 2022;
- **6.21 Environmental Statement: Non-Technical Summary** – Summarises in non-technical language the contents of the Environmental Statement including the key features of the baseline, proposed mitigation and residual significant effects.

2.8 Volume 7: Other Documents

- 2.8.1 This volume includes additional documents that have been produced in support of the Application.

Volume Contents

- 2.8.2 The following documents are contained within this volume:
- **7.1 Biodiversity Net Gain Report** – Presenting the methodology and results of a Biodiversity Net Gain (BNG) assessment using the Statutory Biodiversity Metric User Guide (Department for Environment, Food and Rural Affairs (Defra), 2024a), and BNG good practice principles which are described in Appendix E (Chartered Institute of Ecology and Environmental Management (CIEEM), Institute of Environmental Management and Assessment (IEMA) and Construction Industry Research and Information Association (CIRIA), 2019);

- **7.2 Outline Code of Construction Practice (CoCP)** – outlines the principles and procedures which will be applied to the Project to mitigate the potential environmental impacts of construction. The CoCP is supported by the following appendices:
 - 7.2 Appendix A – CoCP Environmental Constraints Plan
 - 7.2 Appendix B – Outline Site Waste Management Plan
 - 7.2 Appendix C – Outline Soil Resource Plan
 - 7.2 Appendix D – Outline Dust Management Plan
 - 7.2 Appendix E – Community Engagement and Public Information
 - 7.2 Appendix F – Outline Noise and Vibration Management Plan
 - 7.2 Appendix G – Outline Flood Warning and Evacuation Plan
 - 7.2 Appendix H – Greenhouse Gas Reduction Strategy
- **7.3 Outline Construction Traffic Management Plan** – sets out proposals for the management of construction traffic on the local highway network in the vicinity of the Project during the construction period in order to limit any potential disruptions and implications on the overall transport network. The appendices supporting Application Document 7.3 Outline Construction Traffic Management Plan are listed below:
 - 7.3 Appendix A – AIL Access Strategy
 - 7.3 Appendix B – Outline Construction Worker Travel Plan
 - 7.3 Appendix C – Indicative Highway Mitigation Plans (Guide to the Plans and Sections A to H)
- **7.4 Outline Landscape and Ecological Management Plan** – sets out the framework for the planting, management and monitoring of landscaping and ecological mitigation and enhancement habitats;
 - 7.4 Appendix A – Arboricultural Impacts Plan
 - 7.4 Appendix B – Ancient Woodland and Veteran Tree Strategy
 - 7.4 Appendix C – Planting Schedules
 - 7.4 Appendix D – Outline Landscape Proposals
 - 7.4 Appendix E – Bat Flyway Locations
 - 7.4 Appendix F – Bird Diverter Locations
- **7.5 Outline Archaeological Mitigation Strategy and Outline Written Scheme of Investigation** – providing the process, guiding principles and methods for planning and implementation of additional archaeological mitigation works proposed to mitigate the adverse effects of the Project;
- **7.6 Outline Public Rights of Way Management Plan** – sets out the principles and procedures to minimise and manage potential construction impacts associated with the Project on the PRow network;
- *7.7 Document number not used*

- **7.8 Electric and Magnetic Field Compliance Report** – assessing the compliance of electric and magnetic fields (EMFs) produced by the Project within the requirements of National Policy Statement for Electricity Networks Infrastructure (EN-5) (Department for Energy Security and Net Zero, 2024);
- **7.9 Flood Risk Assessment** – provides a summary of flood risk from all relevant sources to the Project, and an assessment of the predicted impact of the Project on flood risk elsewhere. The document describes how the risk of flooding will be managed and includes the standard mitigation measures proposed;
- **7.10 Water Framework Directive Assessment** – an assessment of the effects of the Project on inland surface waters, transitional waters, coastal waters and groundwaters, and details of the proposed mitigation measures;
- **7.11 Transport Assessment** – establishes the baseline transport conditions relevant to the Project, identifies the future transport conditions and transport impacts of the Project and illustrates whether mitigation is required for transport issues generated by the Project:
 - Appendix A – Norwich to Tilbury RSA Strategy
 - Appendix B - Consultation on the Scope of the Assessment
 - Appendix C - Existing Bus Services
 - Appendix D - Committed Developments
 - Appendix E - LRN AM and PM Peak Construction Traffic Committed Development Impacts
 - Appendix F - Junction Capacity Assessment
 - Appendix G - Multi-Modal Transport Report
 - Appendix H - Junction Capacity Assessment Results
 - Appendix I - Figures
- **7.12 Visualisations** – presents the visualisations produced for the Project to support Chapter 11: Historic Environment (document reference 6.11) and Chapter 13: Landscape and Visual (document reference 6.13), including the type of visualisation and the reason for selection;
- **7.13 - Document number not used**
- **7.14 Equality Impact Assessment** – Provides details of how the Applicant has paid due regard to the needs of protected characteristic groups in line with the Equality Act 2010 and the Public Sector Equality Duty (PSED);
- **7.15 Design and Access Statement** – a report describing the factors that influence design in relation to the permanent linear elements of the Project. The DAS sets out the background to the Project, the design principles applied by the Applicant and summaries the approach to and development of good design;
- **7.16 Design Approach for Site Specific Infrastructure (DASSI)** – outlines the design guidance that will be taken forward into detailed design. It sets out an approach to the design of site-specific infrastructure of non-linear works; this includes the proposed substations, works to substations and Cable Sealing End (CSE) compounds;

- **7.17 Strategic Options Backcheck and Review** - addresses the backcheck and review of the strategic options considered for the Norwich to Tilbury project in East Anglia against the need case;
- **7.18 2022 – Corridor and Preliminary Routeing and Siting Study** – a study undertaken to identify the broad locations for the required infrastructure, focussing on the routeing of new electricity transmission infrastructure and the siting of a new substation;
- **7.19 2023 – Strategic Options Backcheck and Review** – a 2023 report addressing the backcheck and review of the strategic options considered for the Norwich to Tilbury project in East Anglia. The report also includes information about wider reinforcements in the south-east;
- **7.20 2023 – Design Development Report for the Project** – describes how the Project has evolved since the non-statutory consultation (undertaken between April and June 2022) in response to feedback to that consultation and further environmental and engineering studies;
- **7.21 2024 – Design Development Report for the Project** – describes how the Project has evolved since the 2023 non-statutory consultation (undertaken between June and August 2023) in response to that consultation and further environmental and engineering studies;
- **7.22 2025 – Design Development Report Addendum for Proposed Changes to Connection at Tilbury** – an addendum to the 2024 Design Development Report providing an explanation of the proposed change to the connection into Tilbury to support further targeted consultation.

Bibliography

Department for Energy Security and Net Zero (2024) National Policy Statement for Electricity Networks Infrastructure (EN-5).

Infrastructure Planning (Applications: Prescribed Forms and Procedure) Regulations 2009 (SI 2009/2264) Available at: <https://www.legislation.gov.uk/uksi/2009/2264/contents/made>. (Accessed 25 June 2025).

Biodiversity Gain Requirements (Irreplaceable Habitat) Regulations (2024) (SI. 48). Available at: <https://www.legislation.gov.uk/uksi/2024/48/contents/made>. Accessed July 2025

CIEEM, IEMA, CIRIA (2024) Mandatory Biodiversity Net Gain in England: Technical Guide. Available at: BNG-Technical-Guide-2024-1.pdf. Accessed July 2025

CIEEM, CIRIA, IEMA. (2019) Biodiversity Net Gain. Good Practice principles for development. A practical guide [online] Available at: <https://cieem.net/wp-content/uploads/2019/02/C776a-Biodiversity-net-gain.-Good-practice-principles-for-development.-A-practical-guide-web.pdf> [Accessed: July 2024]

Planning Inspectorate (2018) Advice Note 15: Drafting Development Consent Orders [Online]. Available at: [Nationally Significant Infrastructure Projects - Advice Note Fifteen: drafting Development Consent Orders - GOV.UK](#) Accessed 25 June 2025.

Planning Inspectorate (2024) Nationally Significant Infrastructure Projects: Advice on the Preparation and Submission of Application Documents [online] Available at: <https://www.gov.uk/guidance/nationally-significant-infrastructure-projects-advice-on-the-preparation-and-submission-of-application-documents> Accessed August 2024.

Countryside and Rights of Way Act 2000 (c. 37) Available at: <https://www.legislation.gov.uk/ukpga/2000/37/contents> (Accessed 25 June 2025).

Environmental Protection Act 1990 (c. 43) Available at: <https://www.legislation.gov.uk/ukpga/1990/43/contents> (Accessed 25 June 2025).

Equality Act 2010 (c. 15) Available at: <https://www.legislation.gov.uk/ukpga/2010/15/introduction> (Accessed 25 June 2025).

Infrastructure Planning (Environmental Impact Assessment) Regulations 2017 (SI 2017/572) Available at: <https://www.legislation.gov.uk/uksi/2017/572/contents> (Accessed 25 June 2025).

Planning Act 2008 (c. 29) Available at: <https://www.legislation.gov.uk/ukpga/2008/29/contents> (Accessed 25 June 2025).

Town and Country Planning Act 1990 (c. 8) Available at: <https://www.legislation.gov.uk/ukpga/1990/8/contents> (Accessed 25 June 2025).

Appendix A.

Master Document List

and Revision History

Appendix A

Master Document List and Revision History

Table A.1 below provides a full list of application documents submitted to date. The below table will be used as a ‘living document’ during examination, capturing all updates and revisions to the application documents. For ease of reference the documents are grouped by volumes and colour coded accordingly. The Planning Inspectorate (PINS) reference column in Table A.1. below will not be populated until this document is updated during examination, as these references only become known following submission of the Application. All application documents are revision number (A) at submission and will be updated accordingly if revisions are required during the examination. The document numbering has been prepared in accordance with the *Planning Inspectorate’s Nationally Significant Infrastructure Projects: Advice on the Preparation and Submission of Application Documents*, specifically in Annex A, published in August 2024.

Documents not highlighted are the latest version.

Documents greyed out have been superseded.

Table A.1 Master Document List detailing the revision history for the application documentation

Document No.	Rev No.	PINS Ref	Submission Date	Electronic File Name
Volume 1 – Application Forms				
1.1	(A)	APP-001	August 2025	1.1 Application Form
1.2	(A)	APP-002	August 2025	1.2 Application Cover Letter
1.3	(A)	APP-003	August 2025	1.3 Guide to the Application
1.3	(B)	AS-003 TBC	October 2025	1.3 Guide to the Application
<u>1.3</u>	<u>(C)</u>	<u>TBC</u>	<u>November 2025</u>	<u>1.3 Guide to the Application</u>
1.4	(A)	APP-004	August 2025	1.4 Copies of Newspaper Notices
1.5	(A)	APP-005	August 2025	1.5 Pre-Application Programme Document
1.6	(A)	APP-006	August 2025	1.6 Section 55 Acceptance of Applications Checklist

Document No.	Rev No.	PINS Ref	Submission Date	Electronic File Name
Volume 2 – Plans, Drawings and Sections				
2.0	(A)	APP-007	August 2025	2.0 Guide to the plans
2.1	(A)	APP-008	August 2025	2.1 Location and Master Key Plan
2.2A	(A)	APP-009	August 2025	2.2 Land Plans - Section A
2.2A	(B)	TBC	October 2025	2.2 Land Plans - Section A
2.2B	(A)	APP-010	August 2025	2.2 Land Plans - Section B
2.2B	(B)	TBC	October 2025	2.2 Land Plans - Section B
2.2C	(A)	APP-011	August 2025	2.2 Land Plans - Section C
2.2C	(B)	TBC	October 2025	2.2 Land Plans - Section C
2.2D	(A)	APP-012	August 2025	2.2 Land Plans - Section D
2.2D	(B)	TBC	October 2025	2.2 Land Plans - Section D
2.2E	(A)	APP-013	August 2025	2.2 Land Plans - Section E
2.2E	(B)	TBC	October 2025	2.2 Land Plans - Section E
2.2F	(A)	APP-014	August 2025	2.2 Land Plans - Section F
2.2F	(B)	TBC	October 2025	2.2 Land Plans - Section F
2.2G	(A)	APP-015	August 2025	2.2 Land Plans - Section G
2.2G	(B)	TBC	October 2025	2.2 Land Plans - Section G
2.2H	(A)	APP-016	August 2025	2.2 Land Plans - Section H
2.2H	(B)	TBC	October 2025	2.2 Land Plans - Section H

Document No.	Rev No.	PINS Ref	Submission Date	Electronic File Name
2.3A	(A)	APP-017	August 2025	2.3 Works Plans - Section A
2.3B	(A)	APP-018	August 2025	2.3 Works Plans - Section B
2.3C	(A)	APP-019	August 2025	2.3 Works Plans - Section C
2.3D	(A)	APP-020	August 2025	2.3 Works Plans - Section D
2.3E	(A)	APP-021	August 2025	2.3 Works Plans - Section E
2.3F	(A)	APP-022	August 2025	2.3 Works Plans - Section F
2.3G	(A)	APP-023	August 2025	2.3 Works Plans - Section G
2.3H	(A)	APP-024	August 2025	2.3 Works Plans - Section H
2.4A	(A)	APP-025	August 2025	2.4 Traffic Regulation Order Plans - Section A
2.4B	(A)	APP-026	August 2025	2.4 Traffic Regulation Order Plans - Section B
2.4C	(A)	APP-027	August 2025	2.4 Traffic Regulation Order Plans - Section C
2.4D	(A)	APP-028	August 2025	2.4 Traffic Regulation Order Plans - Section D
2.4E	(A)	APP-029	August 2025	2.4 Traffic Regulation Order Plans - Section E
2.4F	(A)	APP-030	August 2025	2.4 Traffic Regulation Order Plans - Section F
2.4G	(A)	APP-031	August 2025	2.4 Traffic Regulation Order Plans - Section G
2.4H	(A)	APP-032	August 2025	2.4 Traffic Regulation Order Plans - Section H
2.5A	(A)	APP-033	August 2025	2.5 Access, Rights of Way and Public Rights of Navigation Plans - Section A
2.5B	(A)	APP-034	August 2025	2.5 Access, Rights of Way and Public Rights of Navigation Plans - Section B

Document No.	Rev No.	PINS Ref	Submission Date	Electronic File Name
2.5C	(A)	APP-035	August 2025	2.5 Access, Rights of Way and Public Rights of Navigation Plans - Section C
2.5D	(A)	APP-036	August 2025	2.5 Access, Rights of Way and Public Rights of Navigation Plans - Section D
2.5E	(A)	APP-037	August 2025	2.5 Access, Rights of Way and Public Rights of Navigation Plans - Section E
2.5F	(A)	APP-038	August 2025	2.5 Access, Rights of Way and Public Rights of Navigation Plans - Section F
2.5G	(A)	APP-039	August 2025	2.5 Access, Rights of Way and Public Rights of Navigation Plans - Section G
2.5H	(A)	APP-040	August 2025	2.5 Access, Rights of Way and Public Rights of Navigation Plans - Section H
2.6.1	(A)	APP-041	August 2025	2.6.1 Design and Layout Plans - Subs and Cables
2.6.2	(A)	APP-042	August 2025	2.6.2 Design and Layout Plans - Overhead Lines
2.6.3	(A)	APP-043	August 2025	2.6.3 Design and Layout Plans - Traffic and Transport
2.7	(A)	APP-044	August 2025	2.7 Elevation Drawings - Overhead Line Profiles – Part 1
2.7	(A)	APP-045	August 2025	2.7 Elevation Drawings - Overhead Line Profiles – Part 2
2.14	(A)	APP-046	August 2025	2.14 Special Category and Crown Land Plans
2.14	(B)	TBC	October 2025	2.14 Special Category and Crown Land Plans
2.15	(A)	APP-047	August 2025	2.15 Open Access Land Plans
2.16A	(A)	APP-048	August 2025	2.16 Trees and Hedgerows to be Removed and or Managed Plans - Section A

Document No.	Rev No.	PINS Ref	Submission Date	Electronic File Name
2.16B	(A)	APP-049	August 2025	2.16 Trees and Hedgerows to be Removed and or Managed Plans - Section B
2.16C	(A)	APP-050	August 2025	2.16 Trees and Hedgerows to be Removed and or Managed Plans - Section C
2.16D	(A)	APP-051	August 2025	2.16 Trees and Hedgerows to be Removed and or Managed Plans - Section D
2.16E	(A)	APP-052	August 2025	2.16 Trees and Hedgerows to be Removed and or Managed Plans - Section E
2.16F	(A)	APP-053	August 2025	2.16 Trees and Hedgerows to be Removed and or Managed Plans - Section F
2.16G	(A)	APP-054	August 2025	2.16 Trees and Hedgerows to be Removed and or Managed Plans - Section G
2.16H	(A)	APP-055	August 2025	2.16 Trees and Hedgerows to be Removed and or Managed Plans - Section H

Document No.	Rev No.	PINS Ref	Submission Date	Electronic File Name
Volume 3 – Draft Development Consent Order				
3.1	(A)	APP-056	August 2025	3.1 Draft DCO
3.2	(A)	APP-057	August 2025	3.2 Explanatory Memorandum
3.3	(A)	APP-058	August 2025	3.3 Draft DCO - Validation Report for DCO
3.4	(A)	N/A	August 2025	3.4 Draft DCO - Editable Word Version

Document No.	Rev No.	PINS Ref	Submission Date	Electronic File Name
Volume 4 – Compulsory Acquisition Information				
4.1	(A)	APP-059	August 2025	4.1 Statement of Reasons
4.1A	(A)	APP-060	August 2025	4.1 Statement of Reasons – Appendix A – Compulsory Acquisition Schedule
4.1A	(B)	TBC	October 2025	4.1 Statement of Reasons – Appendix A – Compulsory Acquisition Schedule
4.1B	(A)	APP-061	August 2025	4.1 Statement of Reasons – Appendix B – Schedule of Negotiations
4.1B	(B)	TBC	October 2025	4.1 Statement of Reasons – Appendix B – Schedule of Negotiations
4.1C	(A)	APP-062	August 2025	4.1 - Statement of Reasons – Appendix C – Special Category Land Report
4.2	(A)	APP-063	August 2025	4.2 Funding Statement
4.3	(A)	APP-064	August 2025	4.3 Book of Reference
4.3	(B)	TBC	October 2025	4.3 Book of Reference
4.4	(A)	APP-065	August 2025	4.4 Pre-application Land and Rights Negotiations Tracker
4.5	(A)	N/A	August 2025	4.4 Pre-application Land and Rights Negotiations Tracker – Editable Excel Version

Document No.	Rev No.	PINS Ref	Submission Date	Electronic File Name
Volume 5 - Reports and Statements				
5.1	(A)	APP-066	August 2025	5.1 Consultation Report
5.1A	(A)	APP-067	August 2025	5.1A Consultation Report Appendix A - Meetings and correspondence with stakeholders
5.1B	(A)	APP-068	August 2025	5.1B Consultation Report Appendix B - 2022 non-statutory consultation
5.1C	(A)	APP-069	August 2025	5.1C Consultation Report Appendix C - 2023 non-statutory consultation
5.1D	(A)	APP-070	August 2025	5.1D Consultation Report Appendix D - Infrastructure planning EIA regulations 2017 regulation 8 letter to the inspectorate and acknowledgement s46
5.1E	(A)	APP-071	August 2025	5.1E Consultation Report Appendix E - Statement of Community Consultation SoCC and supporting evidence
5.1F	(A)	APP-072	August 2025	5.1F Consultation Report Appendix F - List of prescribed consultees identified and consulted during statutory consultation and Section 42 1 letter sent
5.1G	(A)	APP-073	August 2025	5.1G Consultation Report Appendix G - Section 42 1d consultees and supporting information
5.1H	(A)	APP-074	August 2025	5.1H Consultation Report Appendix H - Section 47 and Section 48 notices
5.1I	(A)	APP-075	August 2025	5.1I Consultation Report Appendix I - Section 47 Consultation Materials – Part 1
5.1I	(A)	APP-075	August 2025	5.1I Consultation Report Appendix I - Section 47 Consultation Materials – Part 2

Document No.	Rev No.	PINS Ref	Submission Date	Electronic File Name
5.1J	(A)	APP-076	August 2025	5.1J Consultation Report Appendix J - Land referencing methodology
5.1K	(A)	APP-077	August 2025	5.1K Consultation Report Appendix K - Targeted Consultation 2025 – Part 1
5.1K	(A)	APP-077	August 2025	5.1K Consultation Report Appendix K - Targeted Consultation 2025 – Part 2
5.1L	(A)	APP-078	August 2025	5.1L Consultation Report Appendix L - Further Landowner Consultation June 2025
5.1M	(A)	APP-079	August 2025	5.1M Consultation Report Appendix M - Adequacy of Consultation Milestone
5.1N	(A)	APP-080	August 2025	5.1N Consultation Report Appendix N - Legal Opinions
5.2	(A)	APP-081	August 2025	5.2 Route Drive Site Visit Guidance Document
5.3	(A)	APP-082	August 2025	5.3 Habitats Regulations Assessment Report
5.4	(A)	APP-083	August 2025	5.4 Statement of Statutory Nuisance
5.5	(A)	APP-084	August 2025	5.5 Consents and Licences Required Under Other Legislation
5.6	(A)	APP-085	August 2025	5.6 Planning Statement
5.7	(A)	APP-086	August 2025	5.7 Policy Compliance Document
5.8	(A)	APP-087	August 2025	5.8 Potential Main Issues for Examination
5.9	(A)	APP-088	August 2025	5.9 Draft Statement of Common Ground – Overview
5.9.1	(A)	APP-089	August 2025	5.9.1 Draft Statement of Common Ground - Norfolk County Council NCC incl LLFA and Highways
5.9.2	(A)	APP-090	August 2025	5.9.2 Draft Statement of Common Ground - Suffolk County Council SCC incl LLFA and Highways

Document No.	Rev No.	PINS Ref	Submission Date	Electronic File Name
5.9.3	(A)	APP-091	August 2025	5.9.3 Draft Statement of Common Ground - Essex County Council ECC incl LLFA and Highways
5.9.4	(A)	APP-092	August 2025	5.9.4 Draft Statement of Common Ground - Thurrock Council TC incl LLFA and Highways
5.9.5	(A)	APP-093	August 2025	5.9.5 Draft Statement of Common Ground - South Norfolk District Council
5.9.6	(A)	APP-094	August 2025	5.9.6 Draft Statement of Common Ground - Babergh and Mid Suffolk District Council
5.9.7	(A)	APP-095	August 2025	5.9.7 Draft Statement of Common Ground – Tendring District Council
5.9.8	(A)	APP-096	August 2025	5.9.8 Draft Statement of Common Ground – Colchester City Council
5.9.9	(A)	APP-097	August 2025	5.9.9 Draft Statement of Common Ground – Braintree District Council
5.9.10	(A)	APP-098	August 2025	5.9.10 Draft Statement of Common Ground – Chelmsford City Council
5.9.11	(A)	APP-099	August 2025	5.9.11 Draft Statement of Common Ground – Brentwood Borough Council
5.9.12	(A)	APP-100	August 2025	5.9.12 Draft Statement of Common Ground – Basildon Borough Council
5.9.13	(A)	APP-101	August 2025	5.9.13 Draft Statement of Common Ground - Natural England
5.9.14	(A)	APP-102	August 2025	5.9.14 Draft Statement of Common Ground - Historic England
5.9.15	(A)	APP-103	August 2025	5.9.15 Draft Statement of Common Ground - Environment Agency

Document No.	Rev No.	PINS Ref	Submission Date	Electronic File Name
5.9.16	(A)	APP-104	August 2025	5.9.16 Draft Statement of Common Ground - Combined IDBs – Water Management Alliance - Letter
5.9.17	(A)	APP-105	August 2025	5.9.17 Draft Statement of Common Ground - Norfolk Wildlife Trust - Letter
5.9.18	(A)	APP-106	August 2025	5.9.18 Draft Statement of Common Ground - Suffolk Wildlife Trust - Letter
5.9.19	(A)	APP-107	August 2025	5.9.19 Draft Statement of Common Ground – Essex Wildlife Trust - Letter
5.9.20	(A)	APP-108	August 2025	5.9.20 Draft Statement of Common Ground - National Highways - Letter
5.9.22	(A)	APP-109	August 2025	5.9.22 Draft Statement of Common Ground – Barnards Farm airfield - Letter
5.9.23	(A)	APP-110	August 2025	5.9.23 Draft Statement of Common Ground – Thurrock airfield - Letter
5.9.24	(A)	APP-111	August 2025	5.9.24 Draft Statement of Common Ground - Network Rail - Letter
5.9.25	(A)	APP-112	August 2025	5.9.25 Draft Statement of Common Ground - Innova Battery Storage Systems - Letter
5.9.26	(A)	APP-113	August 2025	5.9.26 Draft Statement of Common Ground - Anglian Water - Letter
5.9.27	(A)	APP-114	August 2025	5.9.27 Draft Statement of Common Ground – Essex and Suffolk Water - Letter
5.9.28	(A)	APP-115	August 2025	5.9.28 Draft Statement of Common Ground – Exolum - Letter
5.9.29	(A)	APP-116	August 2025	5.9.29 Draft Statement of Common Ground – National Gas Transmission - Letter

Document No.	Rev No.	PINS Ref	Submission Date	Electronic File Name
5.9.30	(A)	APP-117	August 2025	5.9.30 Draft Statement of Common Ground – Scottish Power Renewables EA3 - Letter
5.9.31	(A)	APP-118	August 2025	5.9.31 Draft Statement of Common Ground – Fairwinds Solar Lightsource BP Vantage - Letter
5.9.32	(A)	APP-119	August 2025	5.9.32 Draft Statement of Common Ground - Brook Farm aerodrome - Letter
5.10	(A)	APP-120	August 2025	5.10 National Landscapes - Duty to Seek to Further the Purposes Report s85 Countryside and Rights of Way Act 2000
5.14	(A)	APP-121	August 2025	5.14 Details of Associated Development with references to documents
5.15	(A)	APP-122	August 2025	5.15 Design Development Report

Document No.	Rev No.	PINS Ref	Submission Date	Electronic File Name
Volume 6 – Environmental Statement				
6.1	(A)	APP-123	August 2025	6.1 Environmental Statement Chapter 1 - Introduction
6.1.A1	(A)	APP-124	August 2025	6.1.A1 Environmental Statement Appendix 1.1 - Competent Experts Evidence
6.1.F1	(A)	APP-125	August 2025	6.1.F1 Environmental Statement Figure 1.1 - Site Location and Project Sections
6.2	(A)	APP-126	August 2025	6.2 Environmental Statement Chapter 2 - Key Legislation and Planning Policy Context
6.3	(A)	APP-127	August 2025	6.3 Environmental Statement Chapter 3 - Alternatives
6.3.A1	(A)	APP-128	August 2025	6.3.A1 Environmental Statement – Appendix 3.1 - Our Approach to Options Appraisal
6.3.A2	(A)	APP-129	August 2025	6.3.A2 Environmental Statement – Appendix 3.2 - Our Approach to Consenting
6.4	(A)	APP-130	August 2025	6.4 Environmental Statement Chapter 4 - Project Description
6.4.A1	(A)	APP-131	August 2025	6.4.A1 Environmental Statement Appendix 4.1 - Greenhouse Gas Assessment
6.4.A2	(A)	APP-132	August 2025	6.4.A2 Environmental Statement Appendix 4.2 - Watercourse Crossing Details
6.4.F1	(A)	APP-133	August 2025	6.4.F1 Environmental Statement Figure 4.1 - Proposed Project Design
6.4.F2	(A)	APP-134	August 2025	6.4.F2 Environmental Statement Figure 4.2 - Proposed Project Design - Permanent Features
6.5	(A)	APP-135	August 2025	6.5 Environmental Statement Chapter 5 - EIA Approach and Method

Document No.	Rev No.	PINS Ref	Submission Date	Electronic File Name
6.5.A1	(A)	APP-136	August 2025	6.5.A1 Environmental Statement Appendix 5.1 - National Grids response to the EIA Scoping Opinion
6.5.A2	(A)	APP-137	August 2025	6.5.A2 Environmental Statement Appendix 5.2 - Scope of the Assessment
6.6	(A)	APP-138	August 2025	6.6 Environmental Statement Chapter 6 - Agriculture and Soils
6.6.A1	(A)	APP-139	August 2025	6.6.A1 Environmental Statement Appendix 6.1 - Agricultural Land Classification Report
6.6.A2	(A)	APP-140	August 2025	6.6.A2 Environmental Statement Appendix 6.2 - Agricultural Landholding Information
6.6.F1	(A)	APP-141	August 2025	6.6.F1 Environmental Statement Figure 6.1 - Agriculture and Soils Study Area
6.6.F2	(A)	APP-142	August 2025	6.6.F2 Environmental Statement Figure 6.2 - Provisional Agricultural Land Classification (ALC) Mapping
6.6.F3	(A)	APP-143	August 2025	6.6.F3 Environmental Statement Figure 6.3 - Detailed Agricultural Land Classification (ALC) Mapping
6.6.F4	(A)	APP-144	August 2025	6.6.F4 Environmental Statement Figure 6.4 - Agri-Environmental Schemes
6.6.F5	(A)	APP-145	August 2025	6.6.F5 Environmental Statement Figure 6.5 - Forestry and Woodland Grant Schemes
6.6.F6	(A)	APP-146	August 2025	6.6.F6 Environmental Statement Figure 6.6 - Soil Association Map
6.7	(A)	APP-147	August 2025	6.7 Environmental Statement Chapter 7 - Air Quality
6.7.A1	(A)	APP-148	August 2025	6.7.A1 Environmental Statement Appendix 7.1 - Air Quality Assessment Methodology

Document No.	Rev No.	PINS Ref	Submission Date	Electronic File Name
6.7.A2	(A)	APP-149	August 2025	6.7.A2 Environmental Statement Appendix 7.2 - Air Quality Baseline Data
6.7.A3	(A)	APP-150	August 2025	6.7.A3 Environmental Statement Appendix 7.3 - Air Quality Assessment Results
6.7.F1	(A)	APP-151	August 2025	6.7.F1 Environmental Statement Figure 7.1 - Air Quality Study Area and Constraints
6.7.F2	(A)	APP-152	August 2025	6.7.F2 Environmental Statement Figure 7.2 - Air Quality Background Concentrations (2023)
6.7.F3	(A)	APP-153	August 2025	6.7.F3 Environmental Statement Figure 7.3 - Air Quality Background Concentrations (2030)
6.7.F4	(A)	APP-154	August 2025	6.7.F4 Environmental Statement Figure 7.4 - Air Quality Construction Dust Study Area
6.7.F5	(A)	APP-155	August 2025	6.7.F5 Environmental Statement Figure 7.5 - Air Quality Affected Road Network
6.7.F6	(A)	APP-156	August 2025	6.7.F6 Environmental Statement Figure 7.6 - Air Quality Verification
6.7.F7	(A)	APP-157	August 2025	6.7.F7 Environmental Statement Figure 7.7 - Air Quality Generators
6.8	(A)	APP-158	August 2025	6.8 Environmental Statement Chapter 8 - Ecology and Biodiversity
<u>6.8</u>	<u>(B)</u>	<u>TBC</u>	<u>November 2025</u>	<u>6.8 Environmental Statement Chapter 8 - Ecology and Biodiversity</u>
6.8.A1	(A)	APP-159	August 2025	6.8.A1 Environmental Statement Appendix 8.1 - Habitat Report

Document No.	Rev No.	PINS Ref	Submission Date	Electronic File Name
<u>6.8.A1</u>	<u>(B)</u>	<u>TBC</u>	<u>November 2025</u>	<u>6.8.A1 Environmental Statement Appendix 8.1 - Habitat Report</u>
6.8.A2	(A)	APP-160	August 2025	6.8.A2 Environmental Statement Appendix 8.2 - National Vegetation Classification Report
6.8.A3	(A)	APP-161	August 2025	6.8.A3 Environmental Statement Appendix 8.3 - Hedgerows Regulations Report
6.8.A4	(A)	APP-162	August 2025	6.8.A4 Environmental Statement Appendix 8.4 - Aquatic Report
6.8.A5	(A)	APP-163	August 2025	6.8.A5 Environmental Statement Appendix 8.5 - Terrestrial Invertebrate Report
6.8.A6	(A)	APP-164	August 2025	6.8.A6 Environmental Statement Appendix 8.6 - Reptile Report
6.8.A7	(A)	APP-165	August 2025	6.8.A7 Environmental Statement Appendix 8.7 - Breeding Bird Report - Redacted
<u>6.8.A7</u>	<u>(B)</u>	<u>TBC</u>	<u>November 2025</u>	<u>6.8.A7 Environmental Statement Appendix 8.7 - Breeding Bird Report - Redacted</u>
6.8.A7	(A)	APP-166	August 2025	6.8.A7 Environmental Statement Appendix 8.7 - Breeding Bird Report - Confidential
<u>6.8.A7</u>	<u>(B)</u>	<u>TBC</u>	<u>November 2025</u>	<u>6.8.A7 Environmental Statement Appendix 8.7 - Breeding Bird Report - Confidential</u>
6.8.A8	(A)	APP-167	August 2025	6.8.A8 Environmental Statement Appendix 8.8 - Wintering and Passage Bird Report - Part 1
6.8.A8	(A)	APP-168	August 2025	6.8.A8 Environmental Statement Appendix 8.8 - Wintering and Passage Bird Report - Part 2

Document No.	Rev No.	PINS Ref	Submission Date	Electronic File Name
6.8.A8	(A)	APP-169	August 2025	6.8.A8 Environmental Statement Appendix 8.8 - Wintering and Passage Bird Report - Part 3
6.8.A8	(A)	APP-170	August 2025	6.8.A8 Environmental Statement Appendix 8.8 - Wintering and Passage Bird Report - Part 4
6.8.A9	(A)	APP-171	August 2025	6.8.A9 Environmental Statement Appendix 8.9 - Bat Roost Report
<u>6.8.A9</u>	<u>(B)</u>	<u>TBC</u>	<u>November 2025</u>	<u>6.8.A9 Environmental Statement Appendix 8.9 - Bat Roost Report</u>
6.8.A10	(A)	APP-172	August 2025	6.8.A10 Environmental Statement Appendix 8.10 - Bat Activity Report
<u>6.8.A10</u>	<u>(B)</u>	<u>TBC</u>	<u>November 2025</u>	<u>6.8.A10 Environmental Statement Appendix 8.10 - Bat Activity Report</u>
6.8.A11	(A)	APP-173	August 2025	6.8.A11 Environmental Statement Appendix 8.11 - Bat Radio-tracking Report
6.8.A12	(A)	APP-174	August 2025	6.8.A12 Environmental Statement Appendix 8.12 - Hazel Dormouse Report
6.8.A13	(A)	APP-175	August 2025	6.8.A13 Environmental Statement Appendix 8.13 - Otter and Water Vole Report - Redacted
<u>6.8.A13</u>	<u>(B)</u>	<u>TBC</u>	<u>November 2025</u>	<u>6.8.A13 Environmental Statement Appendix 8.13 - Otter and Water Vole Report - Redacted</u>
6.8.A13	(A)	APP-176	August 2025	6.8.A13 Environmental Statement Appendix 8.13 - Otter and Water Vole Report - Confidential
<u>6.8.A13</u>	<u>(B)</u>	<u>TBC</u>	<u>November 2025</u>	<u>6.8.A13 Environmental Statement Appendix 8.13 - Otter and Water Vole Report - Confidential</u>

Document No.	Rev No.	PINS Ref	Submission Date	Electronic File Name
6.8.A14	(A)	APP-177	August 2025	6.8.A14 Environmental Statement Appendix 8.14 - Species of Principal Importance Report
6.8.A15	(A)	APP-178	August 2025	6.8.A15 Environmental Statement Appendix 8.15 - Badger Report - Redacted
<u>6.8.A15</u>	<u>(B)</u>	<u>TBC</u>	<u>November 2025</u>	<u>6.8.A15 Environmental Statement Appendix 8.15 - Badger Report - Redacted</u>
6.8.A15	(A)	APP-179	August 2025	6.8.A15 Environmental Statement Appendix 8.15 - Badger Report - Confidential
<u>6.8.A15</u>	<u>(B)</u>	<u>TBC</u>	<u>November 2025</u>	<u>6.8.A15 Environmental Statement Appendix 8.15 - Badger Report - Confidential</u>
6.8.A16	(A)	APP-180	August 2025	6.8.A16 Environmental Statement Appendix 8.16 - Designated Sites
6.9	(A)	APP-181	August 2025	6.9 Environmental Statement Chapter 9 - Contaminated Land, Geology and Hydrogeology
6.9.A1	(A)	APP-182	August 2025	6.9.A1 Environmental Statement Appendix 9.1 - Baseline Information and Preliminary Contamination Risk Assessment
6.9.A2	(A)	APP-183	August 2025	6.9.A2 Environmental Statement Appendix 9.2 - Qualitative Minerals Resource and Infrastructure Assessment
6.9.A3	(A)	APP-184	August 2025	6.9.A3 Environmental Statement Appendix 9.3 - Groundwater Baseline and Qualitative Groundwater Risk Assessment
6.9.A4	(A)	APP-185	August 2025	6.9.A4 Environmental Statement Appendix 9.4 - Hydrogeological Risk Assessment
6.9.F1	(A)	APP-186	August 2025	6.9.F1 Environmental Statement Figure 9.1 - Superficial Geology

Document No.	Rev No.	PINS Ref	Submission Date	Electronic File Name
6.9.F2	(A)	APP-187	August 2025	6.9.F2 Environmental Statement Figure 9.2 - Bedrock Geology
6.9.F3	(A)	APP-188	August 2025	6.9.F3 Environmental Statement Figure 9.3 - Mineral Safeguarding Areas, Mineral Consultation Areas, and Minerals Infrastructure
6.9.F4	(A)	APP-189	August 2025	6.9.F4 Environmental Statement Figure 9.4 - Geologically Designated Sites
6.9.F5	(A)	APP-190	August 2025	6.9.F5 Environmental Statement Figure 9.5 - Hydrogeology and Hydrogeological Receptors
6.9.F6	(A)	APP-191	August 2025	6.9.F6 Environmental Statement Figure 9.6 - Sites with a Moderate or Above Risk Classification
6.10	(A)	APP-192	August 2025	6.10 Environmental Statement Chapter 10 - Health and Wellbeing
6.10.A1	(A)	APP-193	August 2025	6.10.A1 Environmental Statement Appendix 10.1 - Health and Wellbeing Baseline Statistics

Document No.	Rev No.	PINS Ref	Submission Date	Electronic File Name
6.10.F1	(A)	APP-194	August 2025	6.10.F1 Environmental Statement Figure 10.1 - Health and Wellbeing Study Areas
6.10.F2	(A)	APP-195	August 2025	6.10.F2 Environmental Statement Figure 10.2 - Health and Wellbeing Receptors
6.10.F3	(A)	APP-196	August 2025	6.10.F3 Environmental Statement Figure 10.3 - Indices of Multiple Deprivation Score
6.10.F4	(A)	APP-197	August 2025	6.10.F4 Environmental Statement Figure 10.4 - Percentage of the Study Area identifying as female
6.10.F5	(A)	APP-198	August 2025	6.10.F5 Environmental Statement Figure 10.5 - Percentage of the Study Area identifying non-white, including Asian, black, mixed ethnic and other
6.10.F6	(A)	APP-199	August 2025	6.10.F6 Environmental Statement Figure 10.6 - Percentage of the Study Area with English as their main language
6.10.F7	(A)	APP-200	August 2025	6.10.F7 Environmental Statement Figure 10.7 - Percentage of the Study Area economically active
6.10.F8	(A)	APP-201	August 2025	6.10.F8 Environmental Statement Figure 10.8 - Percentage of the Study Area with a qualification of level 2 or lower
6.10.F9	(A)	APP-202	August 2025	6.10.F9 Environmental Statement Figure 10.9 - Population density of the Study Area
6.10.F10	(A)	APP-203	August 2025	6.10.F10 Environmental Statement Figure 10.10 - Percentage of the Study Area considered disables under the Equality Act
6.10.F11	(A)	APP-204	August 2025	6.10.F11 Environmental Statement Figure 10.11 - Adult prevalence of overweight (including obesity) in the Study Area
6.10.F12	(A)	APP-205	August 2025	6.10.F12 Environmental Statement Figure 10.12 - Year 6 prevalence of overweight including Obesity in the Study Area

Document No.	Rev No.	PINS Ref	Submission Date	Electronic File Name
6.10.F13	(A)	APP-206	August 2025	6.10.F13 Environmental Statement Figure 10.13 - Population within a 10 minute walk of a green or blue space
6.10.F14	(A)	APP-207	August 2025	6.10.F14 Environmental Statement Figure 10.14 - Crime rate for public order crimes per 100,000
6.11	(A)	APP-208	August 2025	6.11 Environmental Statement Chapter 11- Historic Environment
6.11.A1	(A)	APP-209	August 2025	6.11.A1 Environmental Statement Appendix 11.1 - Historic Environment Baseline Report
6.11.A2	(A)	APP-210	August 2025	6.11.A2 Environmental Statement Appendix 11.2 - Historic Environment Assessment Tables
6.11.A3	(A)	APP-211	August 2025	6.11.A3 Environmental Statement Appendix 11.3 - EACN Substation Geophysical Survey Report
6.11.A4	(A)	APP-212	August 2025	6.11.A4 Environmental Statement Appendix 11.4 - Geophysical Survey Results Report
6.11.A5	(A)	APP-213	August 2025	6.11.A5 Environmental Statement Appendix 11.5 - Trial Trenching Results Report
6.11.A6	(A)	APP-214	August 2025	6.11.A6 Environmental Statement Appendix 11.6 - Geoarchaeological Monitoring of Ground Investigation Works Report
6.11.A7	(A)	APP-215	August 2025	6.11.A7 Environmental Statement Appendix 11.7 - Assessment of Harm to Designated Heritage Assets
6.11.F1	(A)	APP-216	August 2025	6.11.F1 Environmental Statement Figure 11.1 - Historic Environment Study Area
6.11.F2	(A)	APP-217	August 2025	6.11.F2 Environmental Statement Figure 11.2 - Designated Heritage Assets Assessed in the ES Chapter

Document No.	Rev No.	PINS Ref	Submission Date	Electronic File Name
6.11.F3	(A)	APP-218	August 2025	6.11.F3 Environmental Statement Figure 11.3 - Non-Designated Heritage Assets Assessed in the ES Chapter
6.11.F4	(A)	APP-219	August 2025	6.11.F4 Environmental Statement Figure 11.4 - Geophysical Survey and Archaeological Trial Trenching Priority Areas
6.11.F5	(A)	APP-220	August 2025	6.11.F5 Environmental Statement Figure 11.5 - Historic Environment and LVIA Viewpoint Locations
6.12	(A)	APP-221	August 2025	6.12 Environmental Statement Chapter 12 - Hydrology, Land Drainage and Flood Risk
6.12.A1	(A)	APP-222	August 2025	6.12.A1 Environmental Statement Appendix 12.1 - Hydrology, Land Drainage and Flood Risk Baseline Data
6.12.F1	(A)	APP-223	August 2025	6.12.F1 Environmental Statement Figure 12.1 - Study Area and Water Environment Features
6.12.F2	(A)	APP-224	August 2025	6.12.F2 Environmental Statement Figure 12.2 - Flood Risk Areas
6.12.F3	(A)	APP-225	August 2025	6.12.F3 Environmental Statement Figure 12.3 - Water Framework Surface Waterbody Status
6.13	(A)	APP-226	August 2025	6.13 Environmental Statement Chapter 13 - Landscape and Visual
6.13.A1	(A)	APP-227	August 2025	6.13.A1 Environmental Statement Appendix 13.1 - Landscape and Visual Methodology
6.13.A2	(A)	APP-228	August 2025	6.13.A2 Environmental Statement Appendix 13.2 - Landscape Baseline and Assessment
6.13.A3	(A)	APP-229	August 2025	6.13.A3 Environmental Statement Appendix 13.3 - Visual Baseline and Assessment – Part 1

Document No.	Rev No.	PINS Ref	Submission Date	Electronic File Name
6.13.A3	(A)	APP-230	August 2025	6.13.A3 Environmental Statement Appendix 13.3 - Visual Baseline and Assessment – Part 2
6.13.A3	(A)	APP-231	August 2025	6.13.A3 Environmental Statement Appendix 13.3 - Visual Baseline and Assessment – Part 3
6.13.A3	(A)	APP-232	August 2025	6.13.A3 Environmental Statement Appendix 13.3 - Visual Baseline and Assessment – Part 4
6.13.A4	(A)	APP-233	August 2025	6.13.A4 Environmental Statement Appendix 13.4 - Residential Visual Amenity Assessment – Part 1
6.13.A4	(A)	APP-234	August 2025	6.13.A4 Environmental Statement Appendix 13.4 - Residential Visual Amenity Assessment – Part 2
6.13.A5	(A)	APP-235	August 2025	6.13.A5 Environmental Statement Appendix 13.5 - National Landscape Assessment Study
6.13.A6	(A)	APP-236	August 2025	6.13.A6 Environmental Statement Appendix 13.6 - Arboricultural Impact Assessment AIA
6.13.F1	(A)	APP-237	August 2025	6.13.F1 Environmental Statement Figure 13.1 - LVIA Study Area and Landscape Designations
6.13.F2	(A)	APP-238	August 2025	6.13.F2 Environmental Statement Figure 13.2 - Landform and Drainage
6.13.F3	(A)	APP-239	August 2025	6.13.F3 Environmental Statement Figure 13.3 - Trees and Woodland
6.13.F4	(A)	APP-240	August 2025	6.13.F4 Environmental Statement Figure 13.4 - Settlements and Infrastructure
6.13.F5	(A)	APP-241	August 2025	6.13.F5 Environmental Statement Figure 13.5 - National Character Areas and East of England Typology

Document No.	Rev No.	PINS Ref	Submission Date	Electronic File Name
6.13.F6	(A)	APP-242	August 2025	6.13.F6 Environmental Statement Figure 13.6 - Landscape Character Types and Landscape Character Areas
6.13.F7	(A)	APP-243	August 2025	6.13.F7 Environmental Statement Figure 13.7 - Visual Receptors and Viewpoints
6.13.F8	(A)	APP-244	August 2025	6.13.F8 Environmental Statement Figure 13.8 - ZTV of Proposed 400kV Overhead Line by Project Section heat mapping number of structures theoretically visible version
6.13.F9	(A)	APP-245	August 2025	6.13.F9 Environmental Statement Figure 13.9 - ZTV of Proposed 400kV Overhead Line by Project Section proportions of structures visible version
6.13.F10	(A)	APP-246	August 2025	6.13.F10 Environmental Statement Figure 13.10 - ZTV of Bramford Substation Extension
6.13.F11	(A)	APP-247	August 2025	6.13.F11 Environmental Statement Figure 13.11 - ZTV of Wenham Grove CSE Compound
6.13.F12	(A)	APP-248	August 2025	6.13.F12 Environmental Statement Figure 13.12 - ZTV of East Anglia Connection Node EACN
6.13.F13	(A)	APP-249	August 2025	6.13.F13 Environmental Statement Figure 13.13 - ZTV of Great Horkesley EACN Side CSE Compound
6.13.F14	(A)	APP-250	August 2025	6.13.F14 Environmental Statement Figure 13.14 - ZTV of Great Horkesley Tilbury Side CSE Compound
6.13.F15	(A)	APP-251	August 2025	6.13.F15 Environmental Statement Figure 13.15 - ZTV of Fairstead CSE Compounds
6.13.F16	(A)	APP-252	August 2025	6.13.F16 Environmental Statement Figure 13.16 - ZTV of Tilbury North Substation
6.13.F17	(A)	APP-253	August 2025	6.13.F17 Environmental Statement Figure 13.17 - ZTV of Tilbury North Warley Side CSE Compound

Document No.	Rev No.	PINS Ref	Submission Date	Electronic File Name
6.13.F18	(A)	APP-254	August 2025	6.13.F18 Environmental Statement Figure 13.18 - ZTV of Tilbury North Tilbury Side CSE Compound
6.13.F19	(A)	APP-255	August 2025	6.13.F19 Environmental Statement Figure 13.1 - ZTV within the Dedham Vale National Landscape
6.14	(A)	APP-256	August 2025	6.14 Environmental Statement Chapter 14 - Noise and Vibration
6.14.A1	(A)	APP-257	August 2025	6.14.A1 Environmental Statement Appendix 14.1 - Construction Noise and Vibration Data
6.14.A2	(A)	APP-258	August 2025	6.14.A2 Environmental Statement Appendix 14.2 - Construction Traffic Noise Assessment
6.14.A3	(A)	APP-259	August 2025	6.14.A3 Environmental Statement Appendix 14.3 - EACN Substation Operational Noise Assessment
6.14.A4	(A)	APP-260	August 2025	6.14.A4 Environmental Statement Appendix 14.4 - Tilbury North Operational Noise Assessment
6.14.A5	(A)	APP-262	August 2025	6.14.A5 Environmental Statement Appendix 14.5 - Operational Noise from Overhead Lines Informative
6.14.F1	(A)	APP-262	August 2025	6.14.F1 Environmental Statement Figure 14.1 - Baseline Noise Data
6.14.F2	(A)	APP-263	August 2025	6.14.F2 Environmental Statement Figure 14.2 - Construction Noise Assessment Outputs
6.14.F3	(A)	APP-264	August 2025	6.14.F3 Environmental Statement Figure 14.3 - Construction Vibration Assessment Outputs
6.15	(A)	APP-265	August 2025	6.15 Environmental Statement Chapter 15 – Socio-economics, Recreation and Tourism

Document No.	Rev No.	PINS Ref	Submission Date	Electronic File Name
6.15.A1	(A)	APP-266	August 2025	6.15.A1 Environmental Statement Appendix 15.1 - Built and Other Assets within the 3 km Study Area
6.15.A2	(A)	APP-267	August 2025	6.15.A2 - Environmental Statement Appendix 15.2 - Review of Aviation Impact
6.15.F1	(A)	APP-268	August 2025	6.15.F1 Environmental Statement Figure 15.1 - Socio-economics, Recreation and Tourism Study Areas
6.15.F2	(A)	APP-269	August 2025	6.15.F2 Environmental Statement Figure 15.2 - Community Facilities, Businesses, Recreation and Tourism Assets
6.15.F3	(A)	APP-270	August 2025	6.15.F3 Environmental Statement Figure 15.3 - Recreational Land and Recreational Routes
6.16	(A)	APP-271	August 2025	6.16 Environmental Statement Chapter 16 - Traffic and Transport
6.16.A1	(A)	APP-272	August 2025	6.16.A1 Environmental Statement Appendix 16.1 - Engagement Undertaken Relevant to Traffic and Transport
6.16.A2	(A)	APP-273	August 2025	6.16.A2 Environmental Statement Appendix 16.2 - Traffic and Transport Baseline Conditions
6.16.A3	(A)	APP-274	August 2025	6.16.A3 Environmental Statement Appendix 16.3 - Future Baseline
6.16.A4	(A)	APP-275	August 2025	6.16.A4 Environmental Statement Appendix 16.4 - Traffic and Transport Construction Effects
6.16.F1	(A)	APP-276	August 2025	6.16.F1 Environmental Statement Figure 16.1 - Primary Access Routes
6.16.F1	(B)	TBC	October 2025	6.16.F1 Environmental Statement Figure 16.1 - Primary Access Routes

Document No.	Rev No.	PINS Ref	Submission Date	Electronic File Name
6.16.F2	(A)	APP-277	August 2025	6.16.F2 Environmental Statement Figure 16.2 - Sensitive Receptors
6.16.F3	(A)	APP-278	August 2025	6.16.F3 Environmental Statement Figure 16.3 - Personal Injury Collision Data
6.16.F4	(A)	APP-279	August 2025	6.16.F4 Environmental Statement Figure 16.4 - Traffic Counts and PRow User Survey Locations
6.16.F5	(A)	APP-280	August 2025	6.16.F5 Environmental Statement Figure 16.5 - Additional Mitigation Measures
6.17	(A)	APP-281	August 2025	6.17 Environmental Statement Chapter 17 - Cumulative Effects
6.17.A1	(A)	APP-282	August 2025	6.17.A1 Environmental Statement Appendix 17.1 - Intra-project Cumulative Effects
6.17.A2	(A)	APP-283	August 2025	6.17.A2 Environmental Statement Appendix 17.2 - Long List and Short List of Other Developments
6.17.A3	(A)	APP-284	August 2025	6.17.A3 Environmental Statement Appendix 17.3 - Inter-project Cumulative Effects Matrix
6.17.F1	(A)	APP-285	August 2025	6.17.F1 Environmental Statement Figure 17.1 - Long List of Other Developments Considered within the Cumulative Impacts Assessment
6.17.F2	(A)	APP-286	August 2025	6.17.F2 Environmental Statement Figure 17.2 - Short List of Other Developments Considered within the Cumulative Impacts Assessment
6.18	(A)	APP-287	August 2025	6.18 Environmental Statement Chapter 18 - Summary
6.19	(A)	APP-288	August 2025	6.19 Environmental Statement Scoping Report – Including appendices B to K

Document No.	Rev No.	PINS Ref	Submission Date	Electronic File Name
6.19	(A)	APP-289	August 2025	6.19 Environmental Statement Scoping Report – Appendix A – Part 1 of 8
6.19	(A)	APP-290	August 2025	6.19 Environmental Statement Scoping Report – Appendix A – Part 2 of 8
6.19	(A)	APP-291	August 2025	6.19 Environmental Statement Scoping Report – Appendix A – Part 3 of 8
6.19	(A)	APP-292	August 2025	6.19 Environmental Statement Scoping Report – Appendix A – Part 4 of 8
6.19	(A)	APP-293	August 2025	6.19 Environmental Statement Scoping Report – Appendix A – Part 5 of 8
6.19	(A)	APP-294	August 2025	6.19 Environmental Statement Scoping Report – Appendix A – Part 6 of 8
6.19	(A)	APP-295	August 2025	6.19 Environmental Statement Scoping Report – Appendix A – Part 7 of 8
6.19	(A)	APP-296	August 2025	6.19 Environmental Statement Scoping Report – Appendix A – Part 8 of 8
6.20	(A)	APP-297	August 2025	6.20 Environmental Statement Scoping Opinion
6.21	(A)	APP-298	August 2025	6.21 Environmental Statement Non-Technical Summary

Document No.	Rev No.	PINS Ref	Submission Date	Electronic File Name
Volume 7 - Other Documents				
7.1	(A)	APP-299	August 2025	7.1 Biodiversity Net Gain Report
7.2	(A)	APP-300	August 2025	7.2 Outline Code of Construction Practice
7.2A	(A)	APP-301	August 2025	7.2 Outline Code of Construction Practice Appendix A - CoCP Environmental Constraints Plan
7.2B	(A)	APP-302	August 2025	7.2 Outline Code of Construction Practice Appendix B - Outline Site Waste Management Plan
7.2C	(A)	APP-303	August 2025	7.2 Outline Code of Construction Practice Appendix C - Outline Soil Resource Plan
7.2D	(A)	APP-304	August 2025	7.2 Outline Code of Construction Practice Appendix D - Outline Dust Management Plan
7.2E	(A)	APP-305	August 2025	7.2 Outline Code of Construction Practice Appendix E – Community Engagement and Public Information
7.2F	(A)	APP-306	August 2025	7.2 Outline Code of Construction Practice Appendix F - Outline Noise and Vibration Management Plan
7.2G	(A)	APP-307	August 2025	7.2 Outline Code of Construction Practice Appendix G – Outline Flood Warning and Evacuation Plan
7.2H	(A)	APP-308	August 2025	7.2 Outline Code of Construction Practice Appendix H - Greenhouse Gas Reduction Strategy
7.3	(A)	APP-309	August 2025	7.3 Outline Construction Traffic Management Plan
7.3A	(A)	APP-310	August 2025	7.3 Outline Construction Traffic Management Plan - Appendix A - AIL Strategy
7.3B	(A)	APP-311	August 2025	7.3 Outline Construction Traffic Management Plan - Appendix B - Outline Construction Worker Travel Plan

Document No.	Rev No.	PINS Ref	Submission Date	Electronic File Name
7.3C	(A)	APP-312	August 2025	7.3 Outline Construction Traffic Management Plan Appendix C - Indicative Highway Mitigation Plans - Guide to the Plans and Master Key Plan
7.3C A	(A)	APP-313	August 2025	7.3 Outline Construction Traffic Management Plan - Appendix C – Indicative Highway Mitigation Plans – Section A
7.3C B	(A)	APP-314	August 2025	7.3 Outline Construction Traffic Management Plan - Appendix C – Indicative Highway Mitigation Plans – Section B
7.3C C	(A)	APP-315	August 2025	7.3 Outline Construction Traffic Management Plan - Appendix C – Indicative Highway Mitigation Plans – Section C
7.3C D	(A)	APP-316	August 2025	7.3 Outline Construction Traffic Management Plan - Appendix C – Indicative Highway Mitigation Plans – Section D
7.3C E	(A)	APP-317	August 2025	7.3 Outline Construction Traffic Management Plan - Appendix C – Indicative Highway Mitigation Plans – Section E
7.3C F	(A)	APP-318	August 2025	7.3 Outline Construction Traffic Management Plan - Appendix C – Indicative Highway Mitigation Plans – Section F
7.3C G	(A)	APP-319	August 2025	7.3 Outline Construction Traffic Management Plan - Appendix C – Indicative Highway Mitigation Plans – Section G
7.3C H	(A)	APP-320	August 2025	7.3 Outline Construction Traffic Management Plan - Appendix C – Indicative Highway Mitigation Plans – Section H
7.4	(A)	APP-321	August 2025	7.4 Outline Landscape and Ecological Management Plan
<u>7.4</u>	<u>(B)</u>	<u>TBC</u>	<u>November 2025</u>	<u>7.4 Outline Landscape and Ecological Management Plan</u>
7.4 A	(A)	APP-322	August 2025	7.4 Outline Landscape and Ecological Management Plan Appendix A – Outline Vegetation Retention and Removal Plan
7.4 B	(A)	APP-323	August 2025	7.4 Outline Landscape and Ecological Management Plan Appendix B – Ancient Woodland and Veteran Tree Strategy

Document No.	Rev No.	PINS Ref	Submission Date	Electronic File Name
7.4 C	(A)	APP-324	August 2025	7.4 Outline Landscape and Ecological Management Plan Appendix C – Planting Schedules
7.4 D	(A)	APP-325	August 2025	7.4 Outline Landscape and Ecological Management Plan Appendix D – Outline Landscape Proposals
7.4 E	(A)	APP-326	August 2025	7.4 Outline Landscape and Ecological Management Plan Appendix E – Bat Flyway Locations
<u>7.4 E</u>	<u>(B)</u>	<u>TBC</u>	<u>November 2025</u>	<u>7.4 Outline Landscape and Ecological Management Plan Appendix E – Bat Flyway Locations</u>
7.4 F	(A)	APP-327	August 2025	7.4 Outline Landscape and Ecological Management Plan Appendix F – Bird Diverter Locations
7.5	(A)	APP-328	August 2025	7.5 Outline Archaeological Mitigation Strategy and Outline Written Scheme of Investigation
7.6	(A)	APP-329	August 2025	7.6 Outline Public Rights of Way Management Plan
7.8	(A)	APP-330	August 2025	7.8 Electric and Magnetic Field Compliance Report
7.9	(A)	APP-331	August 2025	7.9 Flood Risk Assessment
7.10	(A)	APP-332	August 2025	7.10 Water Framework Directive Assessment
7.11	(A)	APP-333	August 2025	7.11 Transport Assessment
7.11A	(A)	APP-334	August 2025	7.11 Transport Assessment - Appendix A – Norwich to Tilbury RSA Strategy
7.11B	(A)	APP-335	August 2025	7.11 Transport Assessment - Appendix B - Consultation on the Scope of the Assessment
7.11C	(A)	APP-336	August 2025	7.11 Transport Assessment - Appendix C - Existing Bus Services

Document No.	Rev No.	PINS Ref	Submission Date	Electronic File Name
7.11D	(A)	APP-337	August 2025	7.11 Transport Assessment - Appendix D - Committed Developments
7.11E	(A)	APP-338	August 2025	7.11 Transport Assessment - Appendix E - LRN AM and PM Peak Construction Traffic Committed Development Impacts
7.11F	(A)	APP-339	August 2025	7.11 Transport Assessment - Appendix F - Junction Capacity Assessment
7.11G	(A)	APP-340	August 2025	7.11 Transport Assessment - Appendix G - Multi-Modal Strategy
7.11H	(A)	APP-341	August 2025	7.11 Transport Assessment - Appendix H - Junction Capacity Assessment Results
7.11I	(A)	APP-342	August 2025	7.11 Transport Assessment - Appendix I – Figures
7.12	(A)	APP-343	August 2025	7.12 Visualisations – Part 1
7.12	(A)	APP-344	August 2025	7.12 Visualisations – Part 2
7.12	(A)	APP-345	August 2025	7.12 Visualisations – Part 3
7.12	(A)	APP-346	August 2025	7.12 Visualisations – Part 4
7.12	(A)	APP-347	August 2025	7.12 Visualisations – Part 5
7.12	(A)	APP-348	August 2025	7.12 Visualisations – Part 6
7.12	(A)	APP-349	August 2025	7.12 Visualisations – Part 7
7.12	(A)	APP-350	August 2025	7.12 Visualisations – Part 8
7.12	(A)	APP-351	August 2025	7.12 Visualisations – Part 9
7.14	(A)	APP-352	August 2025	7.14 Equality Impact Assessment
7.15	(A)	APP-353	August 2025	7.15 Design and Access Statement

Document No.	Rev No.	PINS Ref	Submission Date	Electronic File Name
7.16	(A)	APP-354	August 2025	7.16 Design Appraisal Site Specific Infrastructure DASSI
7.17	(A)	APP-355	August 2025	7.17 Strategic Options Backcheck Review
7.18	(A)	APP-356	August 2025	7.18 2022 – Corridor Preliminary Routeing and Siting Study
7.19	(A)	APP-357	August 2025	7.19 2023 – Strategic Options Backcheck and Review
7.20	(A)	APP-358	August 2025	7.20 2023 – Design Development Report for the Project
7.21	(A)	APP-359	August 2025	7.21 2024 – Design Development Report for the Project
7.22	(A)	APP-360	August 2025	7.22 2025 – Design Development Report Addendum for Proposed Changes to Connection at Tilbury

National Grid plc
National Grid House,
Warwick Technology Park,
Gallows Hill, Warwick.
CV34 6DA United Kingdom

Registered in England and Wales
No. 4031152
nationalgrid.com